

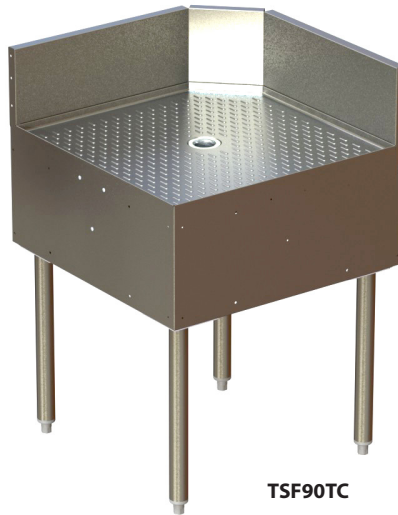


**UNDERBAR CORNER SECTIONS**  
*Inside Corners with Drainboard Top*



JOB	
AREA	
ITEM NO.	
MODEL NO.	

<b>MODELS</b>
TS90TC
TSF90TC



**KEY PRODUCT FEATURES AND BENEFITS**

- Full inside corners are designed for 90 degree inside turns
- The trimmed rear corner provides clearance for beverage and utility lines to transition around the corner without hard bends in the lines
- Stainless steel drainboard surface for durability and rust resistance
- Tool-less, screw-in legs for fast, easy installation
- Can be mounted to any adjacent stable surface

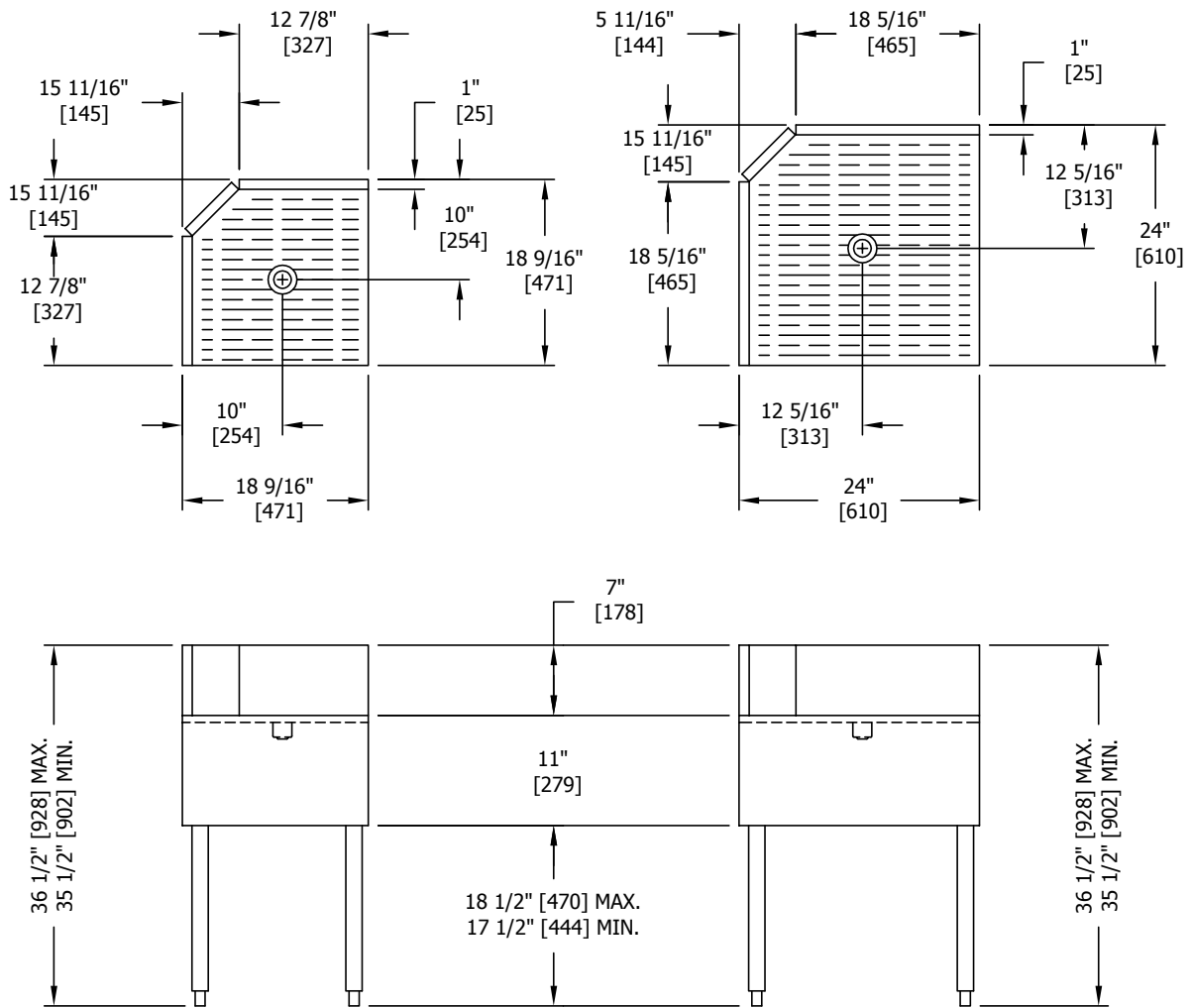
**Quick Features:**

- Designed to mount between two adjacent underbar units to complete an inside turn
- Drainboard top is easy to clean
- All stainless construction for durability



**UNDERBAR CORNER SECTIONS**  
*Inside Corners with Drainboard Top*

MODEL NOS.	TS90TC		TSF90TC
DIMENSIONS: EXTERIOR (mm)	Length In. (mm)	18-9/16" (471)	24" (610)
	Ship Wt. lb. (kg)	45 (20)	50 (23)
PERLICK BAR EQUIPMENT	Front & Sides	Stainless steel	
	Backsplash	TS and TSF: 6" high with 1" return at top, mechanically fastened and sealed	
	Back	Galvanized steel	
	Drainboard	Embossed stainless steel. All horizontal and vertical edges 1/4" radius with balled corners. Underside reinforced with welded brackets. Stainless steel drain socket.	
	Legs	1-5/8" tubular stainless steel with 1" adjustable thermoplastic foot	
PLUMBING	Drain Connection	Drain connection – 1-1/2" NPS male	



TS90TC

TSF90TC