

CASE PACKED

BEER BOTTLE & BEER CAN CABINET CAPACITY

PERLICK CORPORATION MILWAUKEE, WI

| CABINET ASSEMBLY # | INTERNAL VOLUME FT ³ | 12 oz. long neck bottle QUANTITY / CASES | | 12 oz. CAN QUANTITY / CASES | |
|--------------------|---------------------------------|--|-------|-----------------------------|-------|
| | | QUANTITY | CASES | QUANTITY | CASES |
| BBS36 | 7.4 | 182 | 7.6 | 273 | 11.3 |
| BBS60 | 16 | 371 | 15.5 | 553 | 23 |
| BBS84 | 24.8 | 581 | 24.2 | 868 | 36.2 |
| BBS108 | 33.5 | 791 | 32.9 | 1183 | 49.3 |
| | | | | | |
| BBSN32 | 6 | 161 | 6.7 | 238 | 9.9 |
| BBSN52 | 13.3 | 329 | 13.7 | 483 | 20.1 |
| BBSN72 | 20.6 | 518 | 21.6 | 763 | 31.8 |
| BBSN92 | 27.8 | 707 | 29.5 | 1043 | 43.5 |
| | | | | | |
| BBR24 | 7 | 146 | 6.1 | 249 | 10.4 |
| BBS48 | 15.3 | 321 | 13.4 | 513 | 21.4 |
| BBR72 | 23.9 | 523 | 21.8 | 819 | 34.1 |
| BBR96 | 32.6 | 725 | 30.2 | 1121 | 46.1 |
| | | | | | |
| SDBR48 | 14.2 | 267 | 11.1 | 465 | 19.4 |
| SDBR96 | 30.4 | 617 | 25.8 | 1025 | 42.7 |
| | | | | | |
| SDBS60 | 14.8 | 353 | 14.7 | 553 | 23 |
| SDBS108 | 30.9 | 753 | 31.3 | 1183 | 49.3 |
| | | | | | |
| BBRN40 | 13 | 269 | 11.2 | 441 | 18.4 |
| BBRN60 | 19 | 458 | 19.1 | 705 | 29.4 |
| BBRN80 | 26.8 | 617 | 25.7 | 955 | 39.8 |

BEER BOTTLE & BEER CAN CABINET CAPACITY

PERLICK CORPORATION MILWAUKEE, WI

| CABINET ASSEMBLY # | INTERNAL VOLUME FT ³ | 12 oz. long neck bottle QUANTITY / CASES | | 12 oz. CAN QUANTITY / CASES | |
|--------------------|---------------------------------|--|-------|-----------------------------|-------|
| | | QUANTITY | CASES | QUANTITY | CASES |
| PTS36 | 8 | 182 | 7.6 | 273 | 11.3 |
| PTS60 | 17.4 | 371 | 15.5 | 553 | 23 |
| PTS84 | 26.7 | 581 | 24.2 | 868 | 36.2 |
| | | | | | |
| PTR48 | 16.6 | 321 | 13.4 | 513 | 21.4 |
| PTR72 | 25.7 | 523 | 21.8 | 819 | 34.1 |
| | | | | | |
| SDPR48 | 14.1 | 314 | 13.1 | 515 | 21.5 |
| SDPS60 | 14.8 | 335 | 14 | 553 | 23 |

NOTE:

1. ALL QUANTITIES SHOWN ARE CASE PACKED FOR INTERNAL REFERENCE ONLY.
2. SEE CUSTOMER DRAWING: 66342B FOR MAXIMUM CAPACITY STAGGER PACKED BOTTLES & CANS.

INTERNAL REFERENCE ONLY



Perlick Corporation
Milwaukee, WI 53223

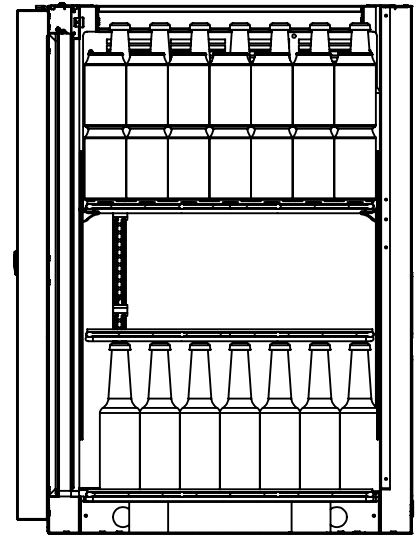
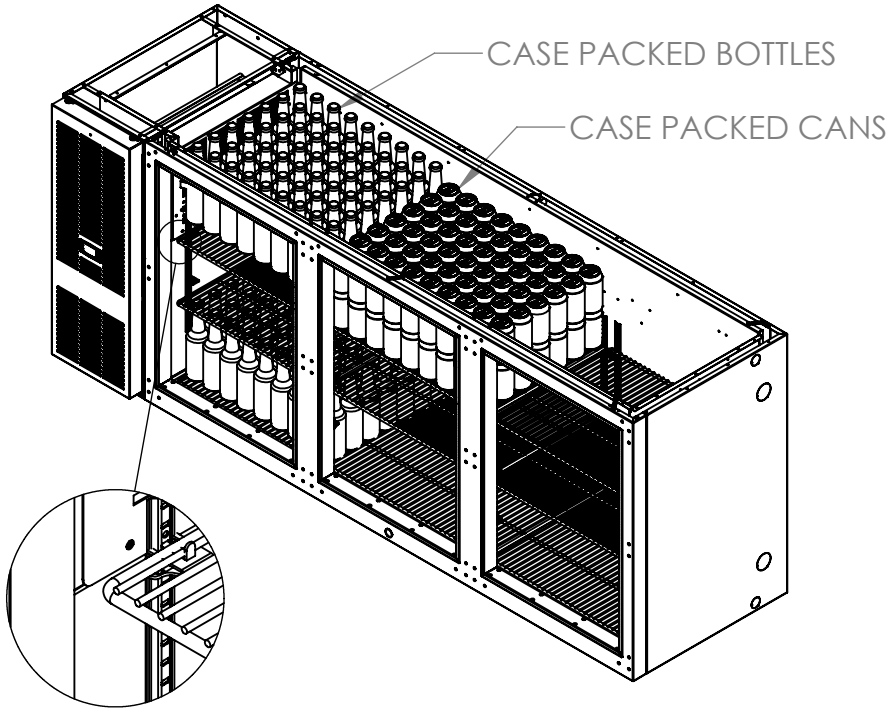
TYPICAL BEER BOTTLE AND CAN CAPACITIES

SCALE 1:32
DRAWN TJZ DATE 6/14/13

66342C

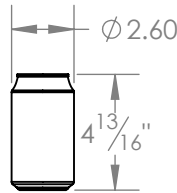
SHEET 1 OF 2

CASE PACKED

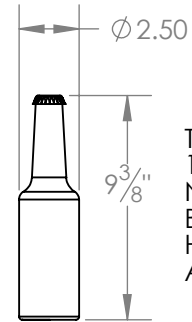


1/2" SHELF
ADJUSTMENT
ON ALL
BRACKETS

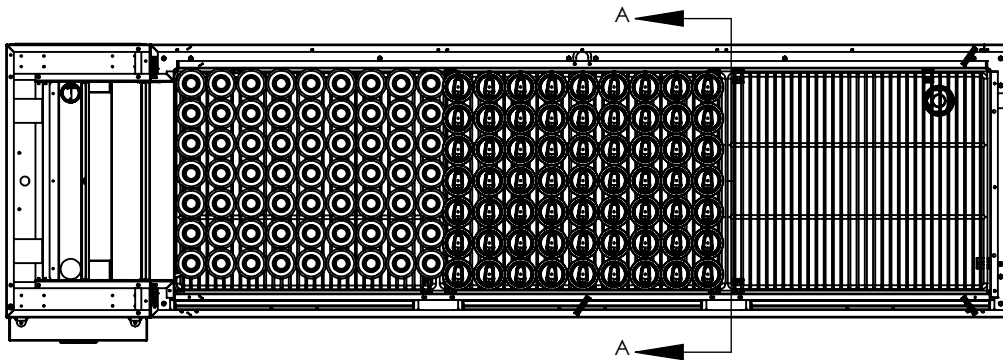
**INTERNAL REFERENCE
ONLY**



TYPICAL
12 OZ. BEER CAN
HEIGHT AND
DIAMETER.



TYPICAL
12 OZ. LONG
NECK
BEER BOTTLE
HEIGHT
AND DIAMETER.



TYPICAL BOTTLE & CAN CAPACITY DIAGRAM:
SHOWN: 3 DOOR BBS SERIES CABINET.
REFER TO SHEET 1 FOR BOTTLE, AND CAN, CASE CAPACITIES
FOR ALL PERLICK CABINET CONFIGURATIONS.



Perlick Corporation
Milwaukee, WI 53223

**TYPICAL BEER BOTTLE
AND CAN CAPACITY
DIAGRAM**

SCALE 1:32
DRAWN TJZ DATE 6/14/13

66342C

SHEET 2 OF 2