

Perlick® SELF-CONTAINED BACK BAR REFRIGERATOR
1-, 2-, 3- AND 4-DOOR



eco friendly
R290 Hydrocarbon
Refrigerant

| |
|-----------|
| JOB |
| AREA |
| ITEM NO. |
| MODEL NO. |



BBS36 with optional glass w/stainless steel door shown



BBS36 with optional liquor drawers shown

| Models | Description |
|--------|--------------|
| BBS36 | 1-Door Model |
| BBS60 | 2-Door Model |
| BBS84 | 3-Door Model |
| BBS108 | 4-Door Model |

KEY PRODUCT FEATURES AND BENEFITS

- Stainless steel interior & top standard on all perlick Back Bar refrigeration for long life durability and easy to clean hygienic storage
- 2" Foamed-in-place eco-friendly insulation provides energy savings with zero ozone depletion
- NSF/ANSI Standard 7 Listed for open food, beverage, and garnish storage
- End wall compressor & evaporator design increases storage capacity by 14% compared to top mounted designs
- Anti-Sweat heaters prevent condensation from forming, extending door gasket life and protecting flooring below from damage or slip hazards
- Multiple door and drawer styles available in any compartment:
 - Choose between Glass, Stainless-Steel, or Black Vinyl or Customer Provided Overlay
 - Choose between Refrigerator, Wine, or Liquor Drawers designed by Tobin Ellis

Quick Features

- Integrated door & drawer locks standard on all units
- Choose compressor mounted on left or right side of cabinet to match your space
- NSF Rated digital controller allows for easy and precise temperature changes
- Choose between three temperature ranges
 - Refrigerator (34°F-42°F) Factory set to 38°F
 - White Wine (40°F-65°F) Factory set to 45°F
 - Red Wine (40°F-65°F) Factory set to 60°F
- Choose between 6000K white LED lighting or cool blue display lighting
- 1 Year Parts and Labor Warranty, 5 Year Compressor Warranty
- Made in USA



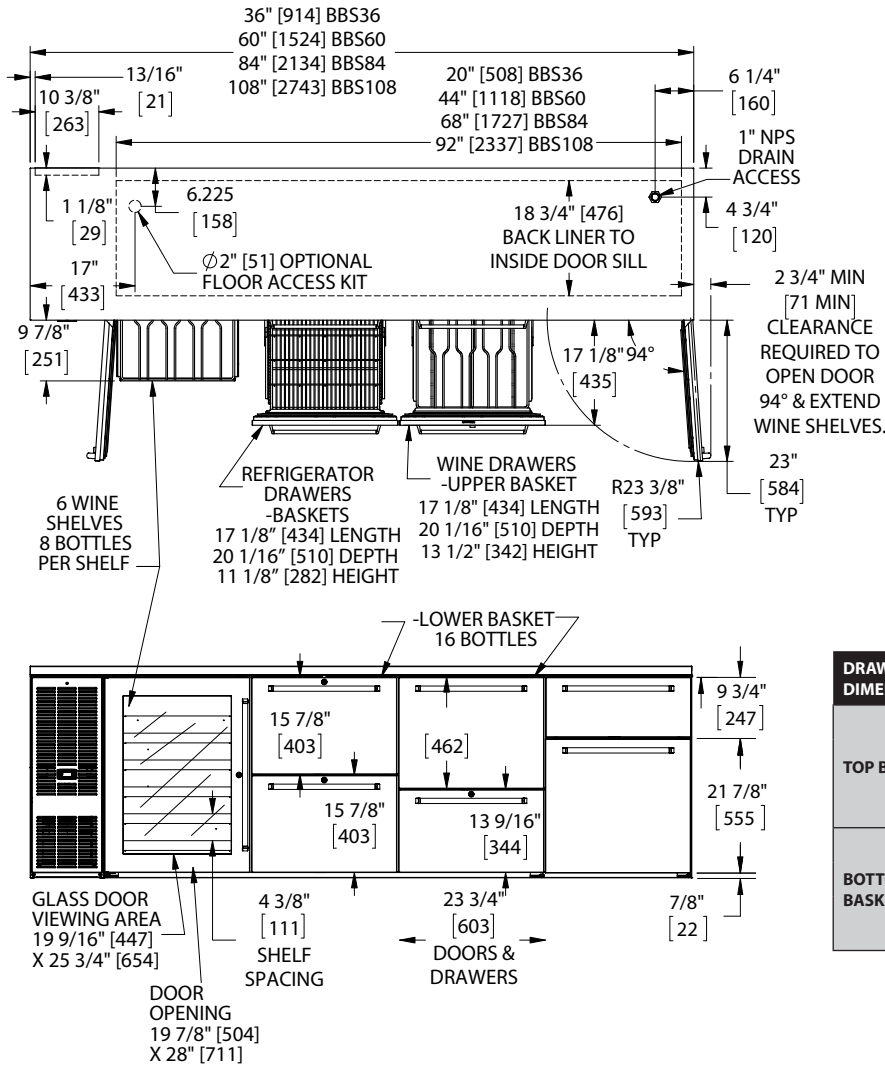
SELF-CONTAINED BACK BAR REFRIGERATOR
1-, 2-, 3- AND 4-DOOR

| MODEL NUMBERS | | BBS36 | BBS60 | BBS84 | BBS108 |
|---------------------------------------|--|-----------------------|-----------------------|-----------------------|-----------------------|
| NUMBER OF COMPARTMENTS/DOORS | | 1 | 2 | 3 | 4 |
| EXTERIOR CABINET DIMENSIONS | Length - in. (mm) | 36 (914) | 60 (1524) | 84 (2134) | 108 (2743) |
| | Depth - in. (mm) | 24¾ (629) | 24¾ (629) | 24¾ (629) | 24¾ (629) |
| | Height - in. (mm) | 34⅞ (878) | 34⅞ (878) | 34⅞ (878) | 34⅞ (878) |
| INTERIOR CABINET DIMENSIONS | Length - in. (mm) | 20 (508) | 44 (1118) | 68 (1727) | 92 (2337) |
| | Depth - in. (mm) | 18¾ (476) | 18¾ (476) | 18¾ (476) | 18¾ (476) |
| | Height - in. (mm) | 28½ (724) | 28½ (724) | 28½ (724) | 28½ (724) |
| INTERNAL VOLUME Net. Cu. Ft. (Litres) | | 7.4 (210) | 16 (453) | 24.8 (702) | 33.5 (949) |
| PRODUCT CAPACITY | CASE PACK - 12 OZ. BOTTLE/CAN | 182/273 | 371/553 | 581/868 | 791/1183 |
| | STAGGERED - 12 OZ. BOTTLE/CAN | 196/292 | 400/592 | 628/932 | 856/1272 |
| SHIPPING WEIGHT Lbs. (kg.) | | 254 (115) | 340 (154k) | 490 (222) | 671 (304) |
| ELECTRICAL SPECIFICATIONS | Electrical Supply | 120 VAC/60 Hz/1 Ph | 120 VAC/60 Hz/1 Ph | 120 VAC/60 Hz/1 Ph | 120 VAC/60 Hz/1 Ph |
| | Running Load Amps | 1.8 | 2.5 | 4.2 | 4.2 |
| | Electrical Connection | Cord connected | Cord connected | Cord connected | Cord connected |
| | Cord Plug Type | NEMA 5-15 | NEMA 5-15 | NEMA 5-15 | NEMA 5-15 |
| | Cord Length | 8' | 8' | 8' | 8' |
| | Defrost Initiation | Automatic | Automatic | Automatic | Automatic |
| | Defrost Type | Off cycle | Off cycle | Off cycle | Off cycle |
| | Thermostat | Digital control | Digital control | Digital control | Digital control |
| | Lighting Type | LED | LED | LED | LED |
| REFRIGERATION SPECIFICATIONS | Horsepower | 1/6 | 1/5 | 1/4 | 1/4 |
| | Refrigerant | R290 | R290 | R290 | R290 |
| | Refrigerant Charge (grams) | 90 | 100 | 90 | 90 |
| | Total Heat Rejection at 75F ambient (BTU/hr) | 900 | 1900 | 2300 | 2300 |
| | Factory Temperature Setting - Refrigerator F (C) | 38° (3.3°) | 38° (3.3°) | 38° (3.3°) | 38° (3.3°) |
| | Temperature Range - Refrigerator F (C) | 33°-40° (0.5°-4.5°) | 33°-40° (0.5°-4.5°) | 33°-40° (0.5°-4.5°) | 33°-40° (0.5°-4.5°) |
| | Factory Temperature Setting - White Wine F (C) | 50°-55° (10.0°-13.0°) | 50°-55° (10.0°-13.0°) | 50°-55° (10.0°-13.0°) | 50°-55° (10.0°-13.0°) |
| | Factory Temperature Setting - Red Wine F (C) | 60°-65° (15.5°-18.0°) | 60°-65° (15.5°-18.0°) | 60°-65° (15.5°-18.0°) | 60°-65° (15.5°-18.0°) |
| | Temperature Range - Wine F (C) | 50°-65° (10.0°-18.0°) | 50°-65° (10.0°-18.0°) | 50°-65° (10.0°-18.0°) | 50°-65° (10.0°-18.0°) |
| | Condensing Unit Location | Left or Right | Left or Right | Left or Right | Left or Right |
| | Expansion Device | Capillary tube | Capillary tube | Capillary tube | Capillary tube |
| | Pull-Out Condensing Unit | Yes | Yes | Yes | Yes |
| | Front Vented | Yes | Yes | Yes | Yes |
| PLUMBING | | None required | None required | None required | None required |

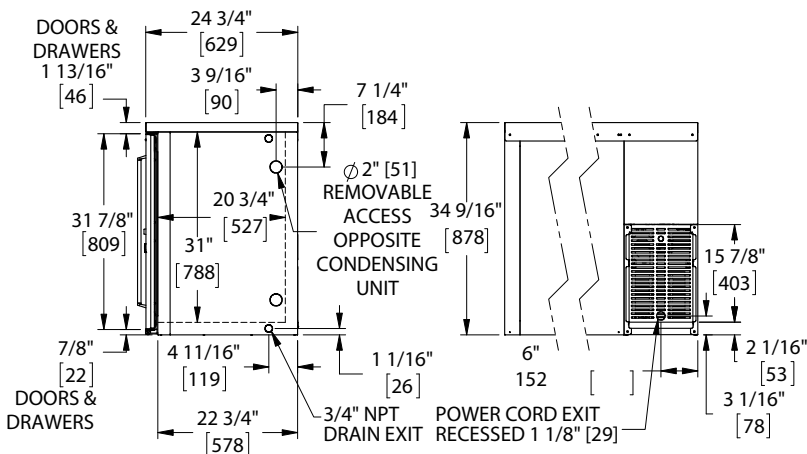
Note: Wine Temperature refrigerators do not carry NSF Rating for open food storage. Wine Temperature units are NSF Certified for non-potentially hazardous bottled and canned beverage storage. Maximum of 2 drawer compartments can be selected for BBS84 and BBS108 models

Perlick® SELF-CONTAINED BACK BAR REFRIGERATOR 1-, 2-, 3- AND 4-DOOR

Note: Open floor drain not provided on models intended for non-packaged food.
Maximum of 2 drawer compartments available on BBS84 and BBS108 models. Three drawer compartments shown only for dimensional purposes.



| DRAWER DIMENSIONS | | Refrigerator Drawer | Wine Drawer | Liquor Drawer |
|-------------------|------------------------|---------------------|---------------|---------------|
| TOP BASKET | Length [mm] | 17 1/8" [434] | | |
| | Depth [mm] | 20 1/16" [510] | | |
| | Max Bottle Height [mm] | 11 1/4" [285] | 13 1/2" [342] | 4 3/4" [120] |
| BOTTOM BASKET | Length [mm] | 17 1/8" [434] | | |
| | Depth [mm] | 20 1/16" [510] | | |
| | Max Bottle Height [mm] | 11 1/4" [285] | 9 1/4" [234] | 17 1/4" [438] |



California Prop 65 Notice:

WARNING: The materials used in this product may contain chemicals known to the State of California to cause cancer and birth defects or other reproductive harm, For more information go to www.P65Warnings.ca.gov.

Form No. 954176
Rev. 03.26.2021