

Perlick® SELF-CONTAINED BACK BAR REFRIGERATOR
 1-, 2-, 3- AND 4-DOOR



eco friendly
 R290 Hydrocarbon Refrigerant

JOB
AREA
ITEM NO.
MODEL NO.



BBS36 with optional glass w/stainless steel door shown



BBS36 with optional liquor drawers shown

Models	Description
BBS36	1-Door Model
BBS60	2-Door Model
BBS84	3-Door Model
BBS108	4-Door Model

KEY PRODUCT FEATURES AND BENEFITS

- Stainless steel interior & top standard on all perlick Back Bar refrigeration for long life durability and easy to clean hygienic storage
- 2" Foamed-in-place eco-friendly insulation provides energy savings with zero ozone depletion
- NSF/ANSI Standard 7 Listed for open food, beverage, and garnish storage
- End wall compressor & evaporator design increases storage capacity by 14% compared to top mounted designs
- Anti-Sweat heaters prevent condensation from forming, extending door gasket life and protecting flooring below from damage or slip hazards
- Multiple door and drawer styles available in any compartment:
 - Choose between Glass, Stainless-Steel, or Black Vinyl or Customer Provided Overlay
 - Choose between Refrigerator, Wine, or Liquor Drawers designed by Tobin Ellis

Quick Features

- Integrated door & drawer locks standard on all units
- Choose compressor mounted on left or right side of cabinet to match your space
- NSF Rated digital controller allows for easy and precise temperature changes
- Choose between three temperature ranges
 - Refrigerator (34°F-42°F) Factory set to 38°F
 - White Wine (40°F-65°F) Factory set to 45°F
 - Red Wine (40°F-65°F) Factory set to 60°F
- Choose between 6000K white LED lighting or cool blue display lighting
- 1 Year Parts and Labor Warranty, 5 Year Compressor Warranty
- Made in USA



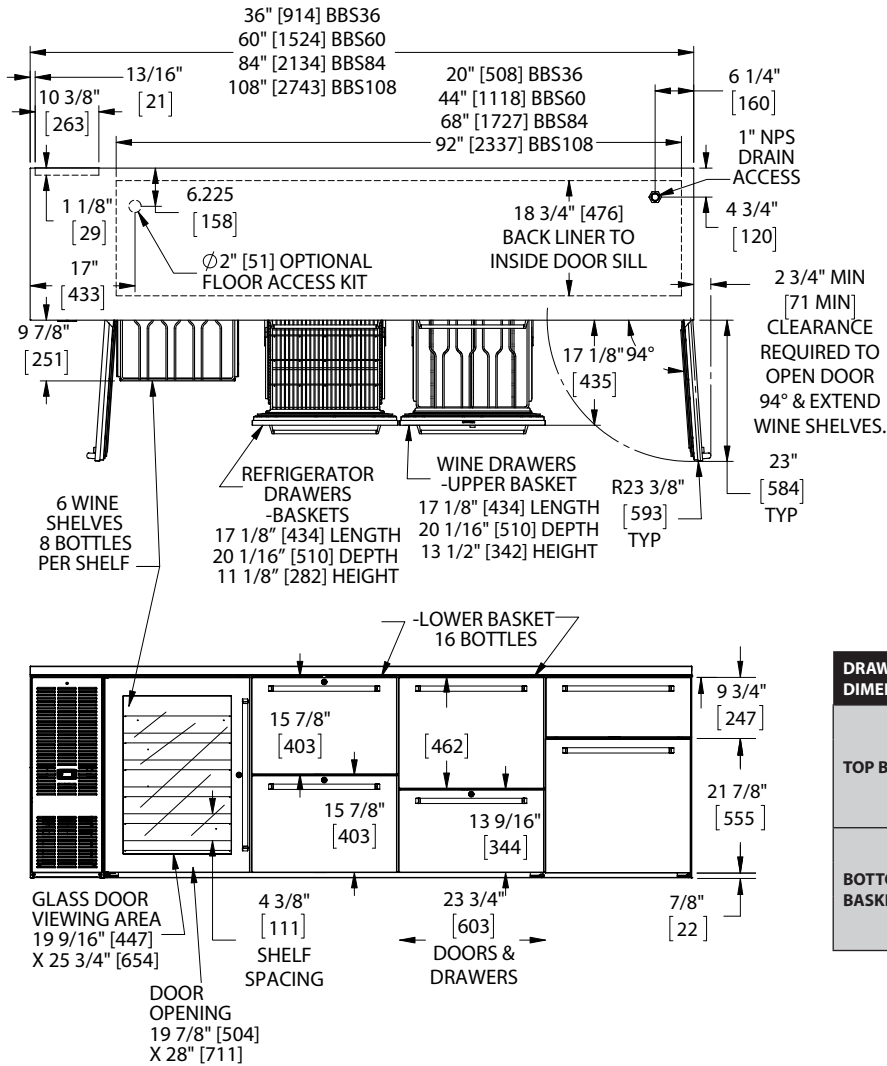
SELF-CONTAINED BACK BAR REFRIGERATOR
1-, 2-, 3- AND 4-DOOR

MODEL NUMBERS		BBS36	BBS60	BBS84	BBS108
NUMBER OF COMPARTMENTS/DOORS		1	2	3	4
EXTERIOR CABINET DIMENSIONS	Length - in. (mm)	36 (914)	60 (1524)	84 (2134)	108 (2743)
	Depth - in. (mm)	24¾ (629)	24¾ (629)	24¾ (629)	24¾ (629)
	Height - in. (mm)	34⅞ (878)	34⅞ (878)	34⅞ (878)	34⅞ (878)
INTERIOR CABINET DIMENSIONS	Length - in. (mm)	20 (508)	44 (1118)	68 (1727)	92 (2337)
	Depth - in. (mm)	18¾ (476)	18¾ (476)	18¾ (476)	18¾ (476)
	Height - in. (mm)	28½ (724)	28½ (724)	28½ (724)	28½ (724)
INTERNAL VOLUME Net. Cu. Ft. (Litres)		7.4 (210)	16 (453)	24.8 (702)	33.5 (949)
PRODUCT CAPACITY	CASE PACK - 12 OZ. BOTTLE/CAN	182/273	371/553	581/868	791/1183
	STAGGERED - 12 OZ. BOTTLE/CAN	196/292	400/592	628/932	856/1272
SHIPPING WEIGHT Lbs. (kg.)		254 (115)	340 (154k)	490 (222)	671 (304)
ELECTRICAL SPECIFICATIONS	Electrical Supply	120 VAC/60 Hz/1 Ph	120 VAC/60 Hz/1 Ph	120 VAC/60 Hz/1 Ph	120 VAC/60 Hz/1 Ph
	Running Load Amps	1.8	2.5	4.2	4.2
	Electrical Connection	Cord connected	Cord connected	Cord connected	Cord connected
	Cord Plug Type	NEMA 5-15	NEMA 5-15	NEMA 5-15	NEMA 5-15
	Cord Length	6'5"	6'5"	6'5"	6'5"
	Defrost Initiation	Automatic	Automatic	Automatic	Automatic
	Defrost Type	Off cycle	Off cycle	Off cycle	Off cycle
	Thermostat	Digital control	Digital control	Digital control	Digital control
REFRIGERATION SPECIFICATIONS	Horsepower	1/6	1/5	1/4	1/4
	Refrigerant	R290	R290	R290	R290
	Refrigerant Charge (grams)	90	100	90	90
	Total Heat Rejection at 75F ambient (BTU/hr)	900	1900	2300	2300
	Factory Temperature Setting - Refrigerator F (C)	38° (3.3°)	38° (3.3°)	38° (3.3°)	38° (3.3°)
	Temperature Range - Refrigerator F (C)	33°-40° (0.5°-4.5°)	33°-40° (0.5°-4.5°)	33°-40° (0.5°-4.5°)	33°-40° (0.5°-4.5°)
	Factory Temperature Setting - White Wine F (C)	50°-55° (10.0°-13.0°)	50°-55° (10.0°-13.0°)	50°-55° (10.0°-13.0°)	50°-55° (10.0°-13.0°)
	Factory Temperature Setting - Red Wine F (C)	60°-65° (15.5°-18.0°)	60°-65° (15.5°-18.0°)	60°-65° (15.5°-18.0°)	60°-65° (15.5°-18.0°)
	Temperature Range - Wine F (C)	50°-65° (10.0°-18.0°)	50°-65° (10.0°-18.0°)	50°-65° (10.0°-18.0°)	50°-65° (10.0°-18.0°)
	Condensing Unit Location	Left or Right	Left or Right	Left or Right	Left or Right
	Expansion Device	Capillary tube	Capillary tube	Capillary tube	Capillary tube
	Pull-Out Condensing Unit	Yes	Yes	Yes	Yes
Front Vented	Yes	Yes	Yes	Yes	
PLUMBING		None required	None required	None required	None required

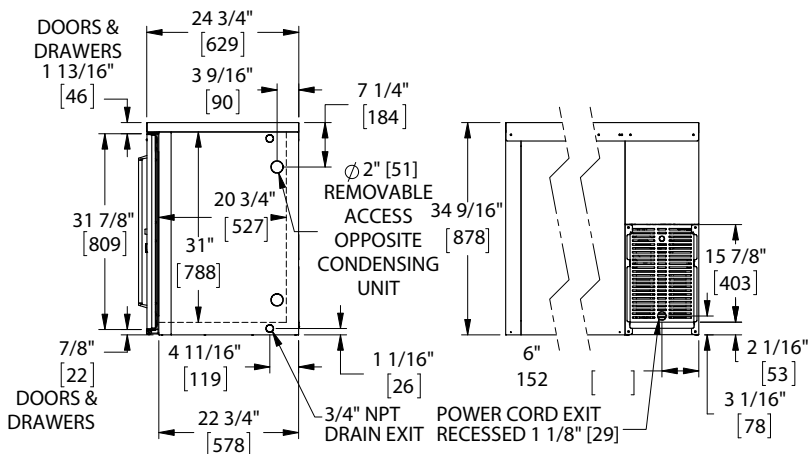
Note: Wine Temperature refrigerators do not carry NSF Rating for open food storage. Wine Temperature units are NSF Certified for non-potentially hazardous bottled and canned beverage storage. Maximum of 2 drawer compartments can be selected for BBS84 and BBS108 models

Perlick® SELF-CONTAINED BACK BAR REFRIGERATOR 1-, 2-, 3- AND 4-DOOR

Note: Open floor drain not provided on models intended for non-packaged food.
Maximum of 2 drawer compartments available on BBS84 and BBS108 models. Three drawer compartments shown only for dimensional purposes.



DRAWER DIMENSIONS		Refrigerator Drawer	Wine Drawer	Liquor Drawer
TOP BASKET	Length [mm]	17 1/8" [434]		
	Depth [mm]	20 1/16" [510]		
	Max Bottle Height [mm]	11 1/4" [285]	13 1/2" [342]	4 3/4" [120]
BOTTOM BASKET	Length [mm]	17 1/8" [434]		
	Depth [mm]	20 1/16" [510]		
	Max Bottle Height [mm]	11 1/4" [285]	9 1/4" [234]	17 1/4" [438]



California Prop 65 Notice:

WARNING: The materials used in this product may contain chemicals known to the State of California to cause cancer and birth defects or other reproductive harm, For more information go to www.P65Warnings.ca.gov.

Form No. 95176
Rev. 06.16.2022