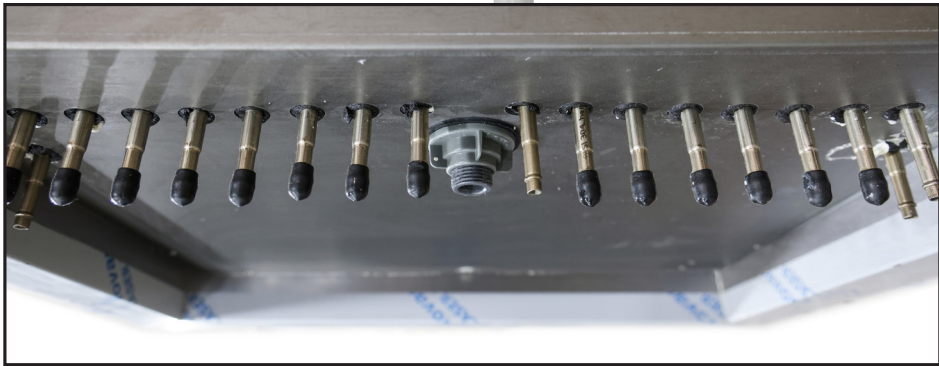




ICE CHEST SODA LINE HOOK-UP GUIDE



Form No. 2902
Rev. 05.24.23

PURPOSE:

This guide is intended to explain how to hook up soda lines to the Perlick cold plate attached to the underside of the ice chest.

NOTE: Soda lines, manifolds and guns are supplied and hooked up by the soda provider



TOOLS NEEDED:

- Oetiker clamping tool
- Work light (as needed)
- Work Gloves

PARTS LIST:

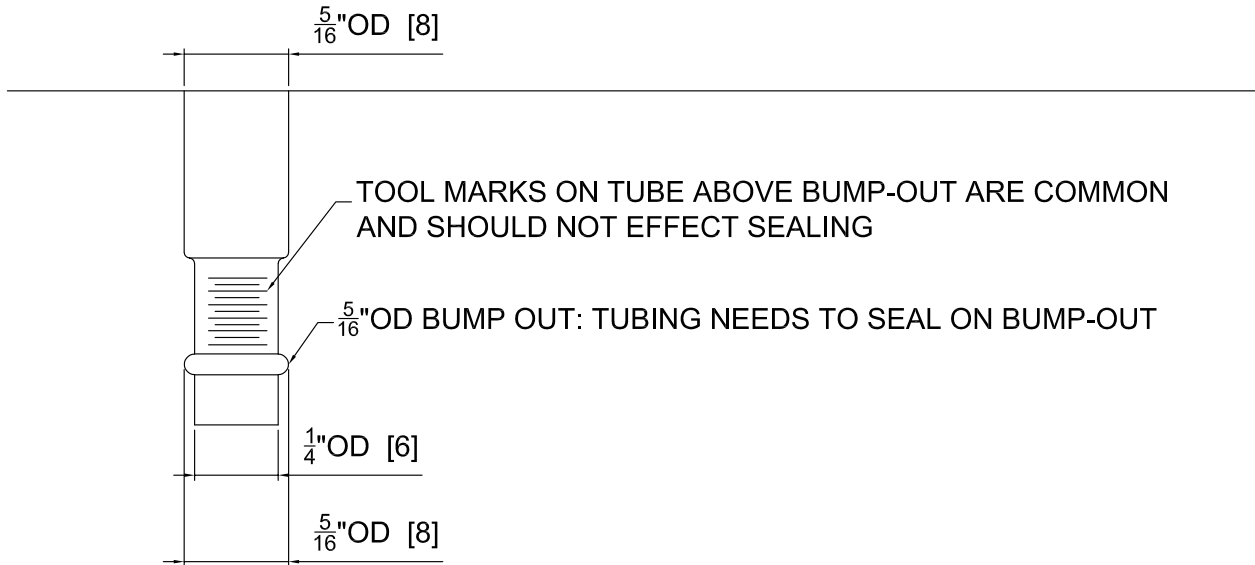
- Ring clamps for 1/4" ID hose (C33037)
- Ring clamps for 3/8" ID hose (C33010)
- 1/4" ID hose (C14229B)
- 3/8" ID hose (customer supplied)
- 1/4"x3/8" barbed hose adapter (57040)

NOTE: All parts needed for installation can be found through Partstown.com

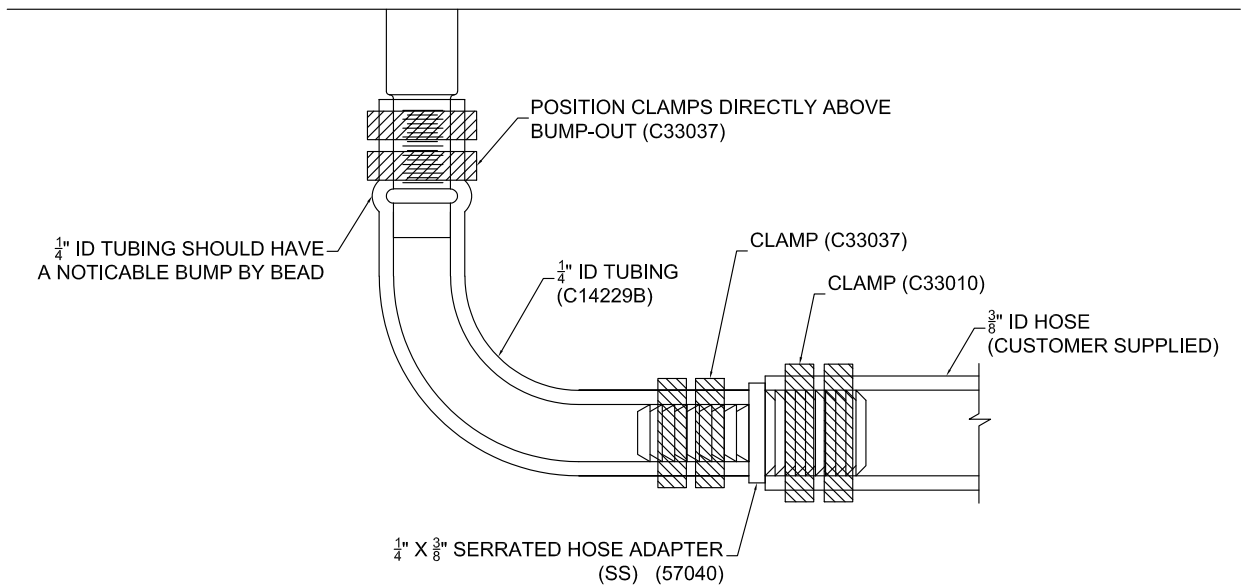


DIAGRAMS

Cold Plate Soda Line Fitting



Soda Line Hook-up



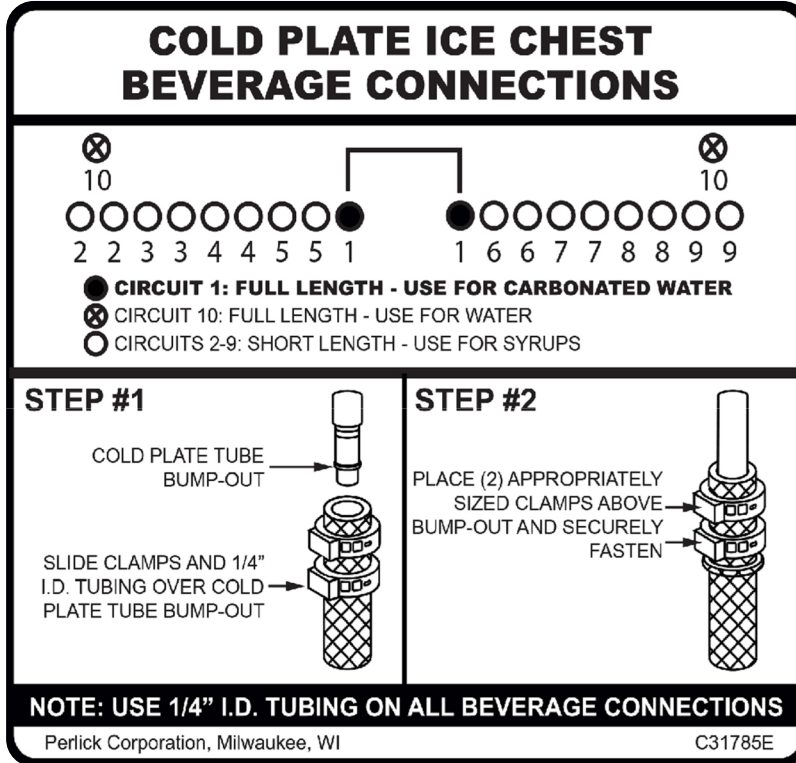
NOTE: An adapter may not be required depending on the size of the soda line being installed by soda provider.



ICE CHEST SODA LINE

Hook-up Guide

Soda Line Hook Up Map



NOTES



Form No. 2902
Rev. 05.24.23