



INSTALLATION AND OPERATION INSTRUCTIONS

SIGNATURE SERIES ICE VAULT - LARGE FORMAT ICE MANAGEMENT SYSTEM



MODEL
ISC12



ecofriendly
R290 Hydrocarbon
Refrigerant

The Perlick Corporation verifies this product **does not contain a prohibited refrigerant** as defined by the California Air Resource Board (CARB), the state of New York, and any other state with HFC prohibition laws. This product does not contain HFC's. The following disclosure statement is provided to comply with the CARB regulation:

This equipment is prohibited from use in California with any refrigerants on the "List Of Prohibited Substances" for that specific end use, in accordance with the California Code of Regulations, title 17, section 95374. This disclosure statement has been reviewed and approved by the Perlick Corporation and the Perlick Corporation attests under penalty of perjury, that these statements are true and accurate.

GENERAL INFORMATION

Introduction

Congratulations on your purchase of a Perlick commercial underbar product. This manual has been prepared to assist you in the installation of your cabinet and to acquaint you with its operation and maintenance.

This manual has been prepared to assist you in the installation of your Ice Vault and to acquaint you with its operation and maintenance.

We dedicate considerable time to ensure that our products provide the highest level of customer satisfaction. If service is required, your dealer can provide you with a list of qualified service agents. For your own protection, never return merchandise for credit without our approval.

We thank you for selecting a Perlick product and assure you of our continuing interest in your satisfaction.

Warranty

To register your product, visit our web site at www.perlick.com. Click on "Commercial", then "Service". Click on the link "Warranty Registration Form". You must complete and submit this form or the installation date will revert back to the ship date.

Please record the purchase date and the dealer's name, address and telephone number below.

Model Number: _____

Serial Number: _____

Purchase Date: _____

Dealer Name & Address _____

Phone Number _____

Form No. Z2600
Rev. 04.20.23



TABLE OF CONTENTS

General Information.....	1
Safety	2
Specifications	3
Preparing the Cabinet for Use	4
Uncrating and Inspecting.....	4
Electrical	4
Installation	4
Warnings	4
General Information.....	5
Cooling System	5
Temperature Control.....	5
Oiling	5
Cleaning	5
Installation of ISC12	6
Operation of ISC12.....	6
Replacement Parts.....	7
Wiring Diagram.....	9

SAFETY

PLEASE READ all instructions completely before attempting to install or operate the unit. Take particular note of the DANGER, WARNING and CAUTION information in the manual. The information is important for the safe and efficient installation, operation and care of your Perlick unit.

⚠ DANGER Indicates a hazard that **WILL** result in serious injury or death if precautions are not followed.

⚠ WARNING Indicates a hazard **MAY** cause serious injury or death if precautions are not followed.

⚠ CAUTION Indicates a hazard where minor or moderate injury may occur if precautions are not followed.

NOTICE Indicates that property damage may occur if warnings or instructions are not followed.

IMPORTANT!

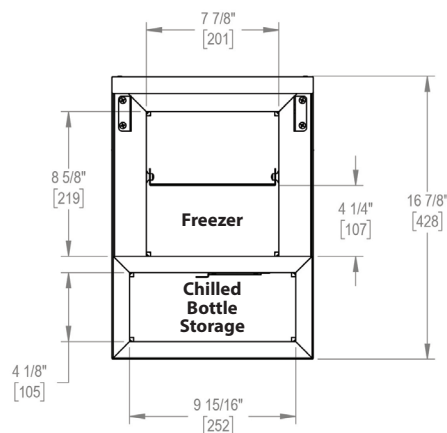
Read and understand all information in this manual before attempting the installation.
All plumbing and electrical work must be performed by a qualified technician and conform to all applicable state and local codes.



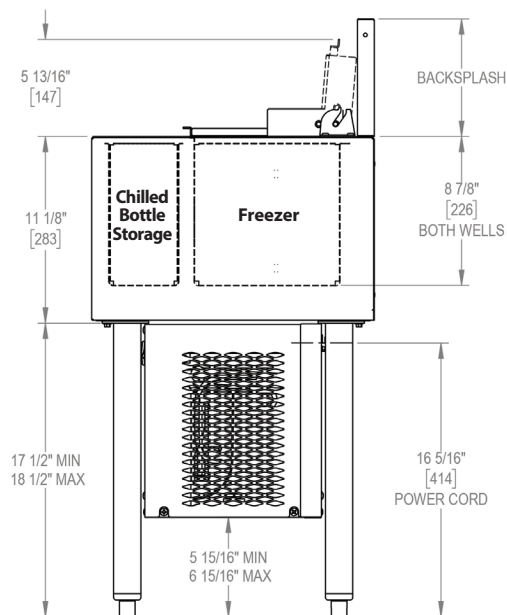
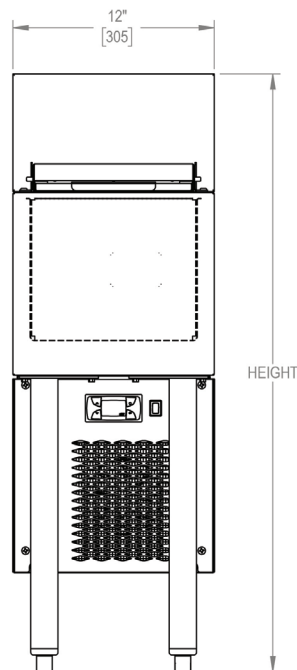
WARNING: California Prop 65 Notice

These products may expose you to chemicals including Chromium, which are known to the state of California to cause cancer and birth defects or other reproductive harm. For more information on whether a product in this list contains these chemicals, please refer to the specific product page at perlick.com. Or to find out more about Prop 65, go to P65Warnings.ca.gov.

MODEL NOS.	ISC12-4, ISC12-6, ISC12-MB
CAPACITY	Front Vault: 0.21 cu. ft. / Rear Vault: 0.34 cu. ft.
HEIGHT in. [mm]	30-5/8" [778] with legs (+1" adjustability)
WIDTH in. [mm]	12" [305]
DEPTH in. [mm]	16-7/8" [429]
SHIP WEIGHT lbs. [kg]	75 [34]
COMPRESSOR H.P.	1/10 h.p.
AMPS	1.0
FRONT CHEST in. [mm]	8-7/8" [226] H X 9-7/8" [251] W X 4-1/8" [105] D
REAR CHEST in. [mm]	8-5/8" [220] H X 7-7/8" [201] W X 8-5/8" [220] D
ELECTRICAL	115 volt, 60 hz, 1 phase AC. Furnished with eight foot rubber cord.
REFRIGERANT & CHARGE [g]	R290 30 grams



BACKSPLASH	OVERALL HEIGHT
7"	35.625
5"	33.625



Preparing the Cabinet for Use

UNCRATING AND INSPECTION

Remove all crating material before operating this cabinet. Carefully inspect cabinet for potential hidden damage. If damage is discovered, file your claim immediately with the transportation company. Perlick is not responsible for damage in transit. Do not discard cabinet legs.

⚠ DANGER Do not use or store flammable liquids (ie; gasoline) or vapors near the appliance to avoid fire.

INSTALLATION

NOTICE The unit must NOT be totally enclosed or damage may occur. Air circulation must not be restricted. The condenser at cabinet front must be provided with a minimum of two inches air space. Be sure to provide access so front cover can be removed to clean the condenser.

NOTICE If unit has been laid on its back or sides, place unit upright and allow a minimum of 24 hours before connecting power. Failure to follow this procedure may damage the compressor and void the warranty.

NOTICE Use care when handling, moving and using the product to avoid damaging the refrigerant tubing or increasing the risk of a leak.

ELECTRICAL

For specifications, see data plate located on the cabinet. Also, see wiring diagram located in this publication.

⚠ WARNING Inspect the electrical cord and plug for damage prior to energizing the unit to avoid potential electric shock.

⚠ WARNING Use electrical grounding to avoid electrocution or electric shock. This appliance is equipped with a 3-prong (grounding) polarized plug for your protection against possible shock hazards. Failure to use grounding may result in death, serious injury, or property damage.

ELECTRICAL (cont.)

⚠ WARNING Never use an extension cord to connect the unit to the electrical source. Do not use a two-prong adapter or remove the power cord ground prong. Failure to use grounding may result in death, serious injury, or property damage.

NOTICE Using any voltage other than specified will result in serious damage to the unit.

USE & OPERATION

⚠ DANGER Do not use or store flammable liquids (ie; gasoline) or vapors near the appliance to avoid fire.

⚠ WARNING To avoid contamination, use food safe containers (not included) for the storage of craft ice in the cabinet's freezer compartment. This equipment does not include a drain and is intended for use with craft ice and other non-hazardous food stored in food safe containers. Perlick recommends the use of NSF food certified containers.

⚠ CAUTION If service is necessary, repair work should be performed by a Perlick-authorized service personnel. Work done by unqualified individuals could create dangerous conditions in unit that may result in serious injury or death.

NOTICE The unit must NOT be totally enclosed or damage may occur.

REPAIR & MAINTENANCE

⚠ WARNING All service work shall be performed by Perlick-authorized service personnel. All component parts shall be replaced with like components. Incorrect parts or improper service may result in fire.

General Information

COOLING SYSTEM

This cabinet maintains temperatures from the cold walls of the storage compartment. If excessive frost accumulates on the walls, remove the plug from the electrical outlet. Never use a sharp instrument to break ice from the cabinet walls.

DIGITAL TEMPERATURE CONTROL

To display the Set point values press the **set** key when the 'SET' label is displayed. The Set point value appears on the display. To change the Set point value, press the **▲** and **▼** keys within 15 seconds. Press **set** to confirm the modification.

The condenser fan motor turns off and on with compressor. The evaporator fan motor runs continuously.



Digital Temperature Controller

OILING

The Hermetic (sealing) compressor and the condenser fan motor require no oiling.

CLEANING

⚠ DANGER Flammable Refrigerant. Risk of fire or explosion. Do not damage refrigeration tubes.

Condenser

The condenser (located behind the front grille) should be inspected every 60 days, and cleaned, if necessary. Failure to keep the condenser clean will cause a loss in condensing unit efficiency and warmer cabinet temperatures.

Cabinet

Use a damp cloth with mild detergent and water to clean the inside and outside of the cabinet. Dry thoroughly.

NOTICE This product contains blown foam insulation using blowing agent R-611 (Methyl Formate). The foam in this product does not contain HFC's, CFC's, or HCFC's.



Installation of ISC12

- Install cabinet legs. Place cabinet in location desired. Level/raise cabinet by adjusting the levelling feet, counterclockwise for up and clockwise for down.
- Plug in cabinet to dedicated 15A outlet. Turn main power switch to on position. Digital controller should flash three times and then should read current setpoint temperature. Refrigeration system should turn on and cabinet should come down to temperature.
- Keep VariChill™ damper door closed while unit comes down to temperature. VariChill™ door may be opened once unit is ready for use to control the temperature of the front vault.

Operation of ISC12

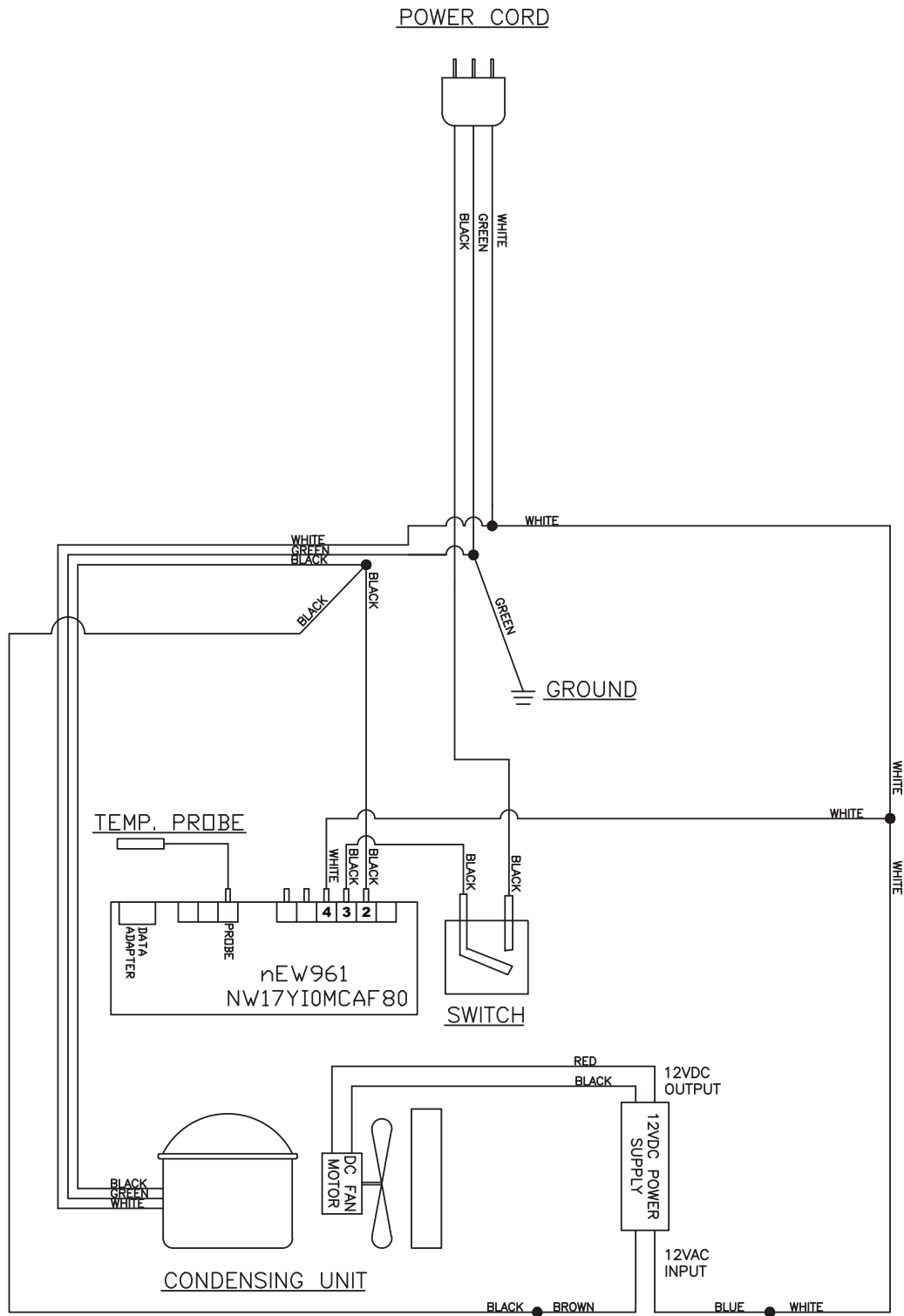
- Rear vault is meant to hold temperatures between -20F and +10F, factory setpoint is 0F. For best performance, the rear vault lid should always be in place and closed (an open lid will increase the amount of ice and frost build-up on the vault and on the ice being stored in the compartment).
- The front vault temperature is dependent upon the rear vault temperature and the opening of the VariChill™ air chute cover to allow air to move between the two vaults. For colder front vault temperatures open the VariChill™ air chute cover, located on the front wall of the rear vault.
- This product is meant for ice preservation and cubes should be brought directly from a freezer to the rear vault. If cubes are allowed to thaw slightly, the moisture on the outside of the cubes will cause cubes that are touching to freeze together.
- Ice that is brought forward to the front vault should be used within 15 minutes or returned to the rear vault. Leaving ice to temper for too long can lead to excess ice melt and cause multiple cubes to form together when re-frozen.
- Periodically, the vault will need to be emptied and the unit powered down to defrost the rear vault. Using the power switch, turn to off position and open rear lid. Allow time for ice and frost to melt from the interior walls and then wipe out interior. Once inside is defrosted and dry, turn unit on using main switch, reduce temperature, and place cubes into rear vault.

⚠ WARNING To avoid contamination use food safe containers (not included) for the storage of craft ice in the cabinet's freezer compartment. This equipment does not include a drain and is intended for use with craft ice and other non-hazardous food stored in food safe containers. Perlick recommends the use of NSF food certified containers.

Replacement Parts

MODEL NO. ISC12	
Description	Part #
Hinge, Right	1018500-1
Hinge, Left	1018592-1
Hinge Fasteners	M00494-254
Front Lower Lid Assy	1017578-1
Rear Upper Lid Assy	1018371
Lid Pivot Studs	C27073-1
Backsplash, 4"	1017511-2
Backsplash, 6"	1017511-1
Rear Vault Divider	1018066-1
Air Chute Door	1018162-1
Air Chute Brackets	1018161-1
Leg Plate/Gusset	61515-1
Legs	61556-1
Front Grille	1017534-1
Rear Grille	1017536-1
Compressor, EM2U3111U w/Electricals	1019724
Overload/Relay/Capacitor Parts Bag	C22999STCP08
Drier	63718
L&S Line Assy	1019731-1
Switch, Power	1018086
Temp Control Kit, Eliwell	1023915-1
Probe, NTC	1023903
Fan Motor, Condenser	68872
Driver, Meanwell, 12w	1023891
Power Cord	68950

Wiring Diagram





Notes

