



POS CABINETS



TSF18POS
with optional door
and end splashes

JOB	
AREA	
ITEM NO.	
MODEL NO.	

MODELS
TSF SERIES
TSF18POS
TSF24POS

MODEL NUMBERS - TSF18POS, TSF24POS

KEY PRODUCT FEATURES AND BENEFITS

- All stainless construction for long life and dependability
- The top is reinforced with welded brackets and is furnished with sound deadening materials for quiet operations
- The 26" work height is set specifically to accommodate a cash drawer and touchscreen monitors
- Specifically designed to integrate into your bar layout and connects easily to other Perlick underbar equipment

Quick Features:

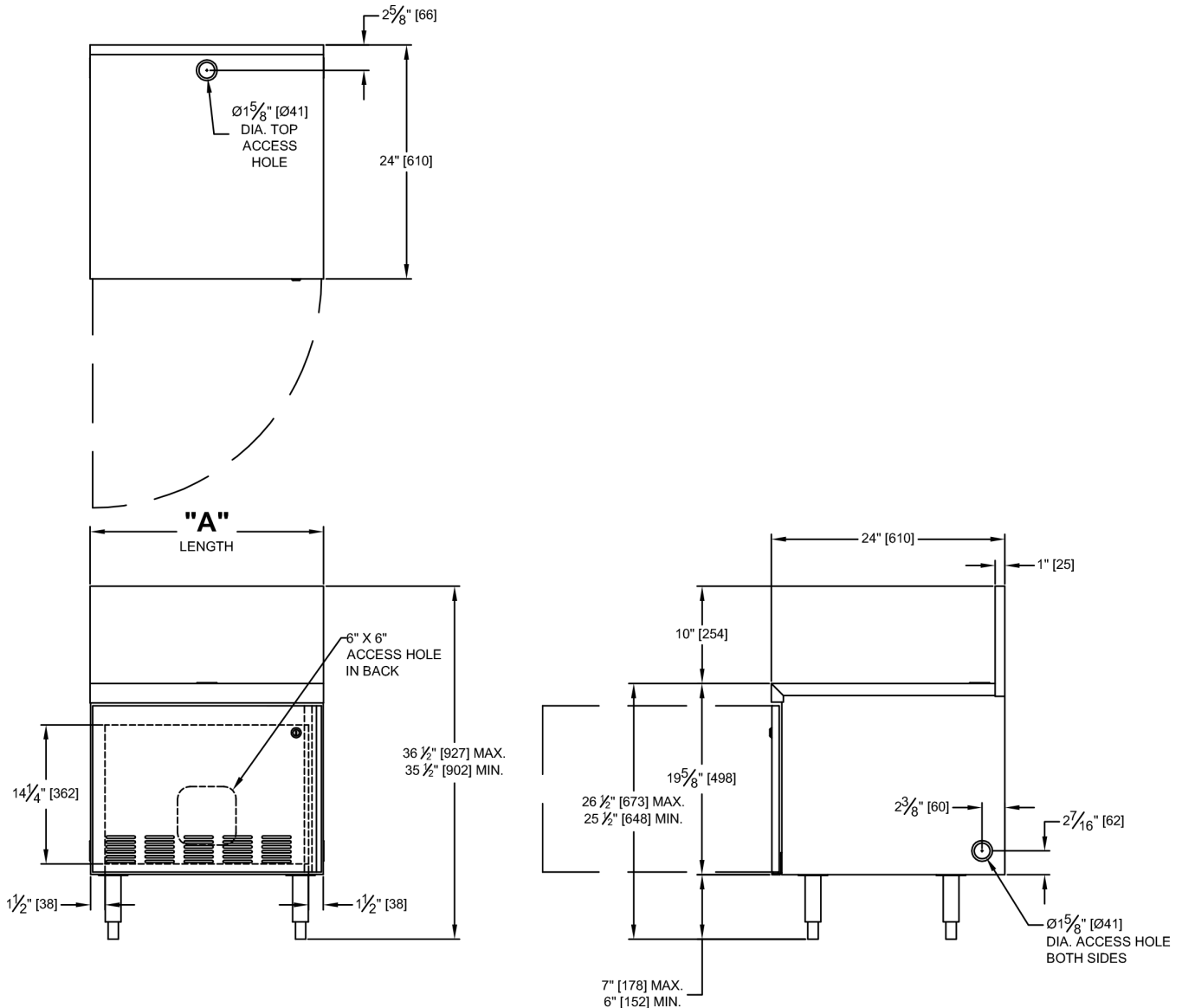
- Optional end splashes available
- Sound deadened reinforced top
- 10" high back splash with 1" return matches up with other Perlick unit heights
- All stainless steel construction for durability
- Large access hole inside the cabinet to route power and internet lines



POS CABINETS

MODEL NUMBERS - TSF18POS, TSF24POS

MODEL NOS.		TSF18POS	TSF24POS
DIMENSIONS: EXTERIOR (mm)	Length, Inches (mm)	18 (457)	24 (610)
	Ship Wt. lbs (kg)	45 (20.4)	24-3/4 (29.5)
CONSTRUCTION	All stainless steel construction. Underside of top is reinforced with welded brackets and is furnished with "sound-deadener".		
BACKSPLASH	Stainless steel to match 6" high adjacent equipment (4" optional) with 1" return at top, mechanically fastened and sealed to top with stainless support bracket(s).		
ACCESS HOLES	1-5/8" I.D. grommeted hole in cabinet top, left & right sides and bottom right corner. 6" x 6" cut-out with edge guard in cabinet back.		
LEGS	1-5/8" tubular, stainless steel with 1" adjustable stainless steel foot.		
DOOR (OPTIONAL)	Stainless steel with vents. Integral handle with dual magnetic door catches. Can be hinged left or right. <i>Lock - optional.</i>		
ACCESSORIES	Door Lock and End Splashes		



Form No. Z2380
Rev 05.12.23