



**GLASS AND CHEMICAL STORAGE CABINETS
WITH SINK**



JOB	
AREA	
ITEM NO.	
MODEL NO.	

MODELS
7057-1
7057-3



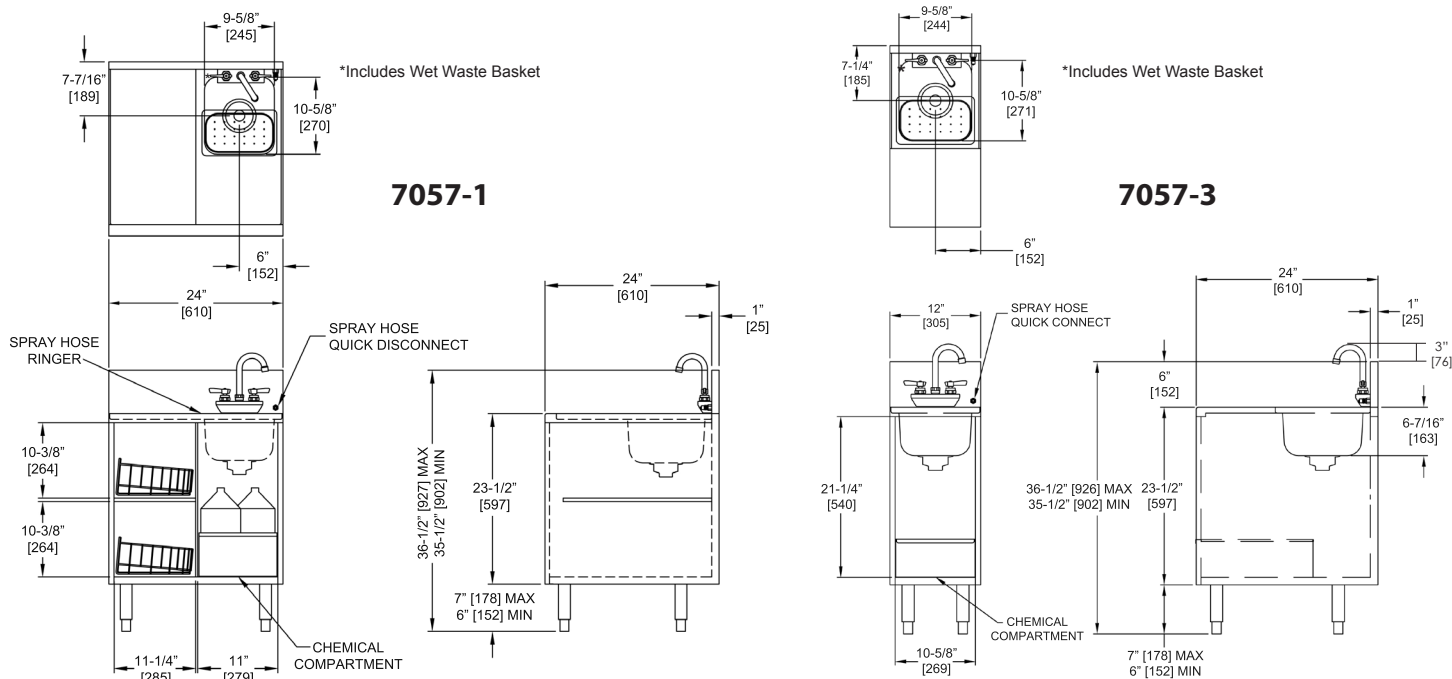
C US
ASME A112.19.3/CSA B45.4
NSF/ANSI 2

Features

- Wet waste sink with removable dump box
- NSF listed, commercial grade hot/cold water faucet (must be ordered separately)
- Convenient chemical storage compartment with convenient removable watertight pan that keeps chemical containers off the floor
- Free-standing station can be used wherever efficient waste disposal, glass handling or chemical storage is needed

Perlick® GLASS AND CHEMICAL STORAGE CABINETS WITH SINK

MODEL NOS.	7057-1	7057-3
LENGTH, INCHES (mm)	24 (610)	12 (305)
DEPTH, INCHES (mm)	24 (610)	
HEIGHT, INCHES (mm)	36-1/2" (926) max. – 35-1/2"(901) min.	
SHIP WEIGHT, LBS. (kg)	91 (42)	58 (26)
EXTERIOR	All exterior parts are made from stainless steel	
BACKSPLASH	Stainless steel 6" with 1" return at top, mechanically fastened and sealed with steel support brackets	
TOP	All horizontal and vertical edges 1/4" radius with balled corners. Underside reinforced with welded brackets.	
SINK	All horizontal and vertical edges 1-3/4" radius with balled corners. Furnished with 1-1/2" stainless steel drain socket and duo-strainer. 10-5/8"x9-5/8"x6". Underside sound deadening.	
WATER FAUCET	Hot and cold, heavy-duty all brass construction, chrome plated goose-neck faucet. Must be ordered separately. Lead-free faucet also available.	
SPRAY HOSE	Black, plastic spray head with four foot reinforced vinyl hose and quick disconnect fitting	
CHEMICAL COMPARTMENT	Removable stainless steel chemical pan	
LEGS	1-5/8" tubular, stainless steel with 1" adjustable stainless steel foot	
PLUMBING	Drain connection – 1-1/2" NPS Male. Hot and cold water connection– 3/8" O.D. copper supply tubes. Spray Hose– 3/8" O.D. copper supply tube.	
OPTIONAL ACCESSORIES	Glass racks (Part No. 50470-2)	N/A



Faucet shown for clarity. Must be ordered separately.