



ARCTICPOUR ADVANCED REFRIGERATION TECHNOLOGY

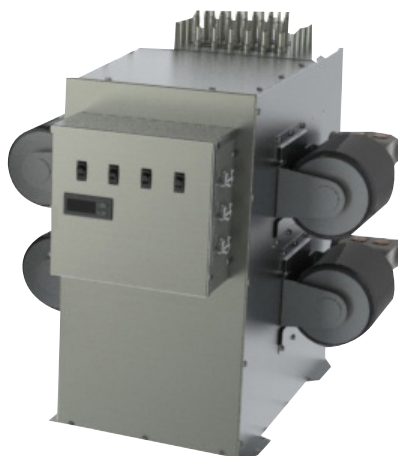


ArcticPOUR
Advanced Refrigeration Technology

JOB
AREA
ITEM NO.
MODEL NO.



ArcticPOUR Refrigeration Deck



ArcticPOUR Glycol Bath

MODELS GLYCOL BATH	MODELS REFRIGERATION DECK
GB1	RD060
GB2	RD060-O
GB3	RD120
GB4	RD120-O
GB1-C	RD060-C
GB2-C	

- INDUSTRY EXCLUSIVE split-deck refrigeration technology features a two-component system of a refrigeration deck and glycol bath.
- Split-deck refrigeration technology provides flexibility in locating the refrigeration deck.
- The refrigeration deck may be located up to 100 feet from the glycol bath. Mounting outdoors removes an indoor heat load of up to 18,000 BTU/Hr.
- ArcticPOUR's glycol bath with optional flash chiller lowers the beer temperature to 6°F below the keg temperature, and can produce 32°F beer when the walk-in cooler is 38°F.
- ArcticPOUR can produce beer at two different temperatures, and can accommodate up to three trunk lines to one glycol bath.



Sizes and Specifications

Air-Cooled Refrigeration Deck - Drawing on page 3

MODEL NOS.	Permanently Connected				Cord Connected	
	RD060	RD060-O	RD120	RD120-O	RD060-C	
DIMENSIONS: EXTERIOR (mm)	Length	31-1/2" (800)	35-15/16" (913)	34-3/8" (873)	38-15/16" (989)	31-1/2" (775)
	Width	17-3/8" (441)	28-1/4" (718)	21-3/4" (552)	33-3/8" (848)	17-3/8" (445)
	Height	15-3/16" (386)	15-3/16" (387)	18-1/16" (459)	18-1/16" (459)	15-3/16" (386)
A minimum of 12" of clearance should be allowed around the entire unit for proper performance. Additional clearance should be considered for above and in front of the unit for serviceability.						
ELECTRICAL	Voltage	120 V	120 V	208/230 V	208/230 V	120 V
	Frequency	60 Hz	60 Hz	60 Hz	60 Hz	60 Hz
	Phase	1 Ø	1 Ø	1 Ø	1 Ø	1 Ø
	RLA	11.5	11.5	19.3	19.3	11.6
	MCA	18.4	18.4	23.8	23.8	
	Max Fuse	30.0	30.0	40	40	
Cord/Plug	N/A	N/A	N/A	N/A	14/3 NEMA 5-15P	
COMPRESSOR	3/4 HP	3/4 HP	1.5 HP	1.5 HP	3/4 HP	
EVAPORATOR RATING @ 20°F (BTUH)	6000	6000	12000	12000	6000	
HEAT REJECTION (MAX)	8100	8100	16800	16800	8100	
REFRIGERANT	R-134a	R-134a	R-134a	R-134a	R-134a	
SHIPPING WEIGHT LBS (kg)	120 (54)	120 (54)	140 (64)	140 (64)	120 (54)	
CABINET	Stainless Steel					
REFRIGERATION	Constant Pressure Expansion Valve, Condensing Unit with Service Valves					
REFRIGERANT CHARGE (grams)	9.5 oz/269 g	9.5 oz/269 g	16 oz/453 g	16 oz/453 g	9.5 oz/269 g	

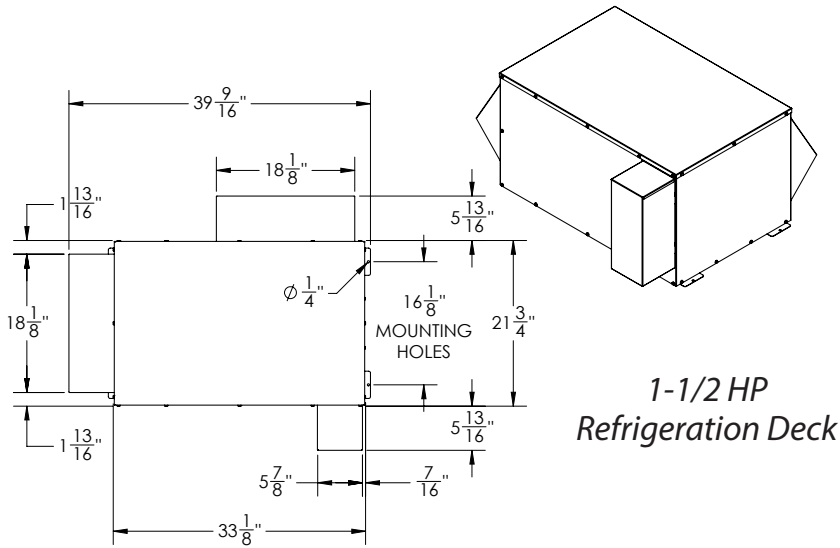
Glycol Bath - Drawing on page 4

MODEL NOS.	Permanently Connected				Cord Connected		
	GB1	GB2	GB3	GB4	GB1-C	GB2-C	
DIMENSIONS: EXTERIOR (mm)	Length "A"	24-3/4" (629)	24-3/4" (629)	24-3/4" (629)	24-3/4" (629)	24-3/4" (629)	24-3/4" (629)
	Width "B"	19" (483)	23-11/16" (602)	23-11/16" (602)	23-11/16" (602)	19" (483)	23-11/16" (602)
	Height "C"	25-5/16" (643)	25-5/16" (643)	25-5/16" (643)	25-5/16" (643)	25-5/16" (643)	25-5/16" (643)
A minimum of 6" of clearance should be allowed around the entire unit for proper performance. Additional clearance should be considered for above the unit and in front of the unit for serviceability.							
ELECTRICAL	Voltage	120 V	120 V	120 V	120 V	120 V	120 V
	Frequency	60 Hz	60 Hz	60 Hz	60 Hz	60 Hz	60 Hz
	Phase	1 Ø	1 Ø	1 Ø	1 Ø	1 Ø	1 Ø
	RLA	6.5	12.6	18.7	24.8	N/A	N/A
	MCA	8.7	13.9	19.9	26.2	N/A	N/A
	Max Fuse	15	20	25	30	N/A	N/A
Current/Plug	N/A	N/A	N/A	N/A	5.8, NEMA 5-15	11.6, NEMA 5-15P	
SHIPPING WEIGHT LBS (kg)	140 (64)	140 (64)	140 (64)	140 (64)	140 (64)	140 (64)	
CIRCULATING PUMP #1	140 GPH / 130 PSIG						
CIRCULATING PUMP #2, #3, #4	100 GPH / 130 PSIG						
RESERVOIR CAPACITY	12 gal						
GLYCOL CONCENTRATION	30%	30%	30%	30%	30%	30%	

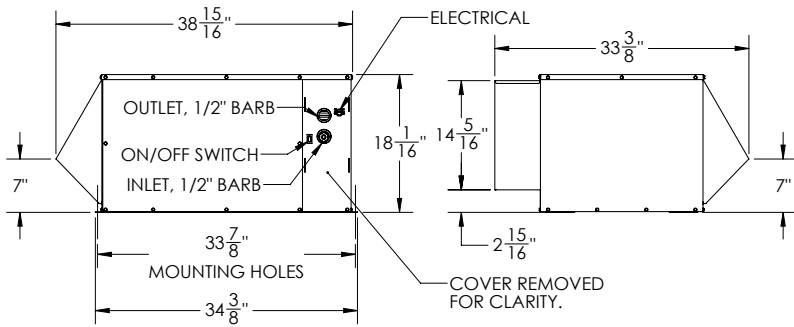
ACCESSORIES	67451	Coolant Connector Parts Bag, Refrigeration Deck to Glycol Bath	61790+1	Rack, 37" X 19-3/4", 3-Tiered
	67451-1	Coolant Connector, Fabricated, Per Foot, Refrigeration Deck to Glycol Bath	61790+2	Rack, 37" X 19-3/4", 4-Tiered
	63299-1	Glycol Solution, 1 gallon	57782	Legs, Set of 4, 6" Nom
	63335	Coolant Connector Kit (Glycol Bath to Trunk Housing)	68470-1	Wall Shelf, Large (RD120)
	63335-1	Coolant Connector Kit (Glycol Bath to Trunk Housing)	68470-2	Wall Shelf, Small (RD060 or GB)
	68455	Flashchill Connector Kit	68508	Rack, ArcticPOUR, Two Tier
	C21499BSS	Stand, 35" X 22"	68508+1	Rack, ArcticPOUR, +1 Extension
	61790	Rack, 37" X 19-3/4", 2-Tiered	68508+2	Rack, ArcticPOUR, +2 Extension

Refrigeration Deck Drawings

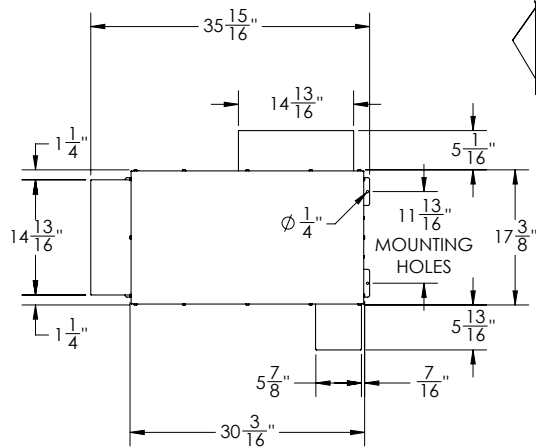
1-1/2 HP REFRIGERATION DECK



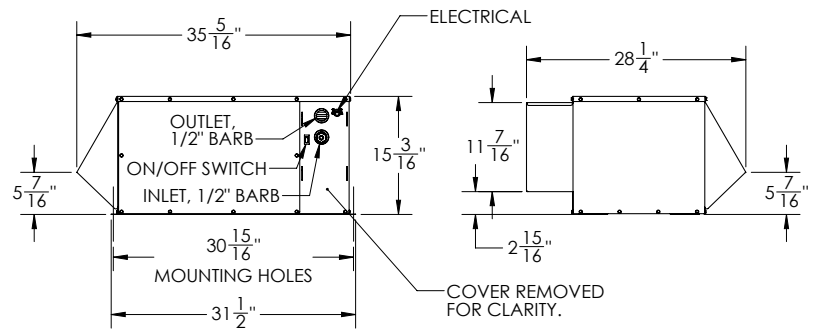
1-1/2 HP Refrigeration Deck



3/4 HP REFRIGERATION DECK CHILL DOWN



3/4 HP Refrigeration Deck





ARCTICPOUR ADVANCED REFRIGERATION TECHNOLOGY

Glycol Bath Drawings

