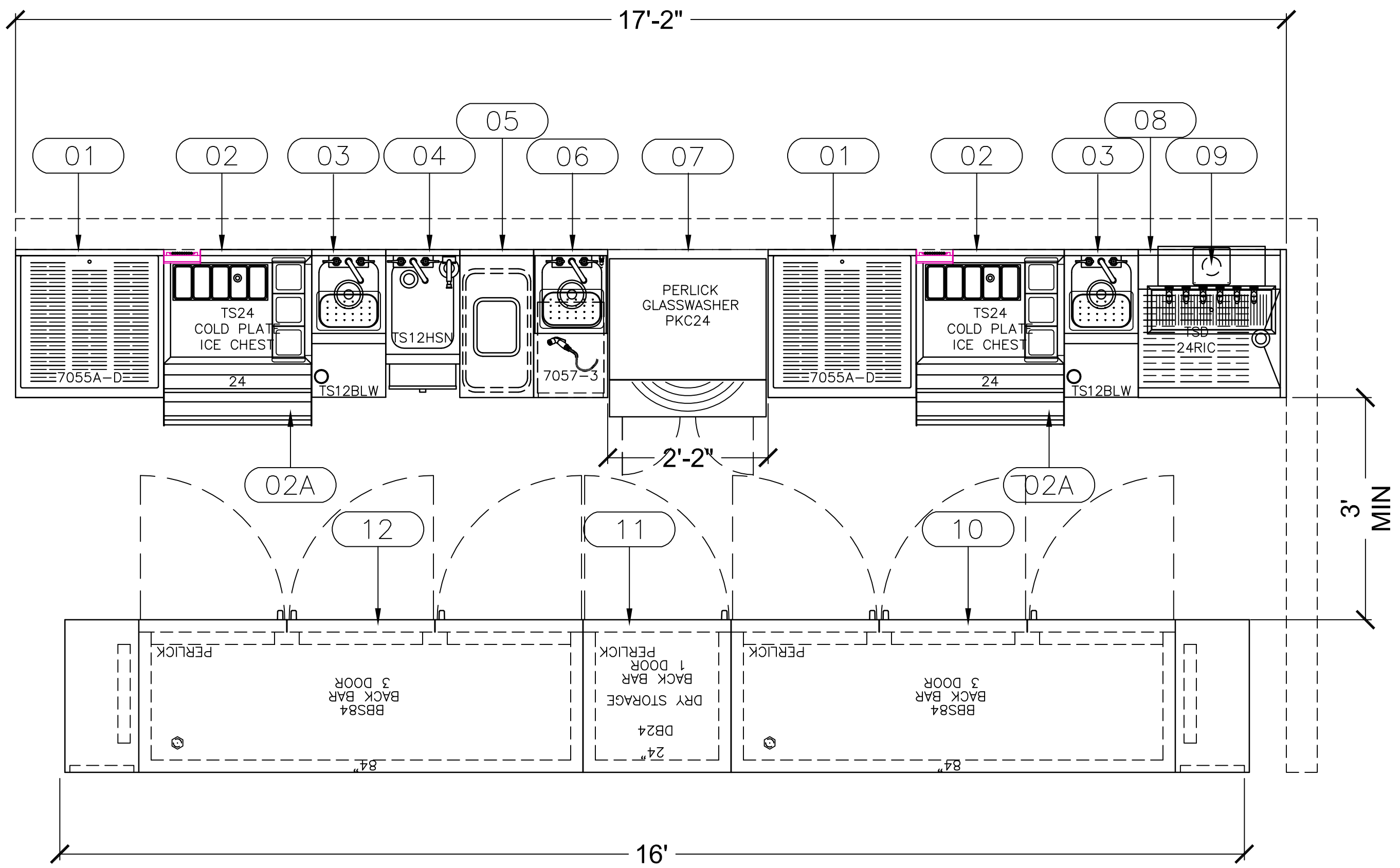


STRAIGHT BAR

GLASSWASHER VERSION



PERLICK EQUIPMENT SCHEDULE															
Item No	Qty	Model Number	Manufacturer	Equipment Category	Equipment Remarks	Volts	Cycle	Phase	Amps	HP	Plug	Electrical AFF (in)	Cold Water Size (in)	Hot Water Size (in)	Drain Size (in)
01	2	7055A-D	Perlick	Underbar Dry Storage											1
02	2	TS24IC8	Perlick	Underbar Ice Chest	7055-265A Chase, BW3-24 Wells, CC5 Tray										0.5
02A	2	SR-D24	Perlick	Underbar Speed Rail											
03	2	TS12BLW	Perlick	Underbar Blender Station	End Splash (L), 7055-52 Dump Box							18	0.375	0.375	1.5
04	1	TS12HSN	Perlick	Underbar Handsink									0.375	0.375	1.5
05	1	TSF12BTB	Perlick	Bridge Trash											
06	1	7057-3	Perlick	Glasswasher Accessory											
07	1	PKC24	Perlick	Glasswasher		120	60	1	11.0	0.01		6	0.05	0.05	1.5
08	1	TSD24RIC	Perlick	Underbar Fillers & Drainboards	7055-67A Bev.Chase (C)										1.5
09	1	4006-6B	Perlick	Dispensing Head, Draft Beer, Tee Tower	C18640A Drain Pan										
10	1	BBS84**L	Perlick	Back Bar Equipment	Adj. Legs 6-7.25"	120	60	1	6.3	0.33	X				
11	1	DB24	Perlick	Back Bar Equipment	Adj. Legs 6-7.25"										
12	1	BBS84**R	Perlick	Back Bar Equipment	Adj. Legs 6-7.25"	120	60	1	6.3	0.33	X				

- SYMBOLS**
- ✦ H HOT WATER CONNECTION
 - ✦ C COLD WATER CONNECTION
 - ✦ D DRAIN (ICE CHESTS)- 1/2" MALE NPS
 - ✦ D DRAIN - 1-1/2" MALE NPS
 - ⊕ ELECTRICAL CONNECTION
 - ⊕ DUPLEX OUTLET



I HAVE CHECKED ALL DIMENSIONS AND EQUIPMENT LOCATIONS ON THIS DRAWING FOR ACCURACY:

Approved for fabrication as shown.

Approved for fabrication with changes as noted.

Drawing requires changes as noted; submit revised drawing for my approval.

PLEASE TYPE OR PRINT:

NAME _____ DATE _____

TITLE _____ DATE _____

** DO NOT USE THIS DRAWING FOR CONSTRUCTION SPECIFICATIONS **
 This drawing is provided solely to illustrate the positioning of Perlick Equipment.
 Non-Perlick Equipment or Features which have been copied or derived from other sources are shown on this drawing for reference only.

SCALE: 3/4" = 1'-0"	PROJECT: BAR 4	PROJECT NO: 1002101	EXHIBIT NO: A
REV. DATE:	DRAWN BY: jab	DRAWING NO: 1002101	EXHIBIT NO: A
DATE: 05/10/2016			
DESIGNED BY:			
CHECKED BY: D	SHEET: 1 of 1	PROPERTY OF THE PERLICK CORP. NOT TO BE COPIED OR USED DETRIMENTAL TO OUR INTERESTS.	