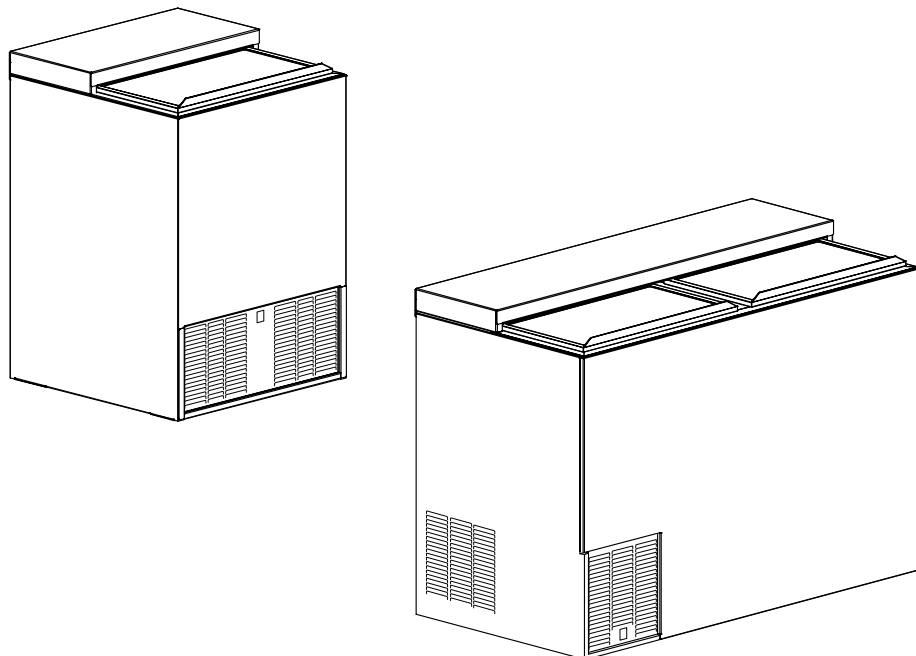


INSTALLATION AND OPERATION INSTRUCTIONS

GLASS FROSTERS

MODEL NOS.

FR24 Series
FR36 Series
FR48 Series
FR60 Series



IMPORTANT INFORMATION

This manual has been prepared to assist you in the installation of your Glass Froster and to acquaint you with its operation and maintenance.

We dedicate considerable time to ensure that our products provide the highest level of customer satisfaction. If, however service is required, call Perlick at 1-800-777-7267 or your dealer who can provide you with a list of qualified service agents. For your own protection, never return merchandise for credit without our approval.

We thank you for selecting a Perlick product and assure you of our continuing interest in your satisfaction.

IMPORTANT WARRANTY INFORMATION

A Warranty card is enclosed that must be completed and mailed to the Perlick Corporation in order to register the warranty. If the card is not returned to Perlick, the warranty period will begin from the date the equipment is shipped from the factory.

Table of Contents

Cabinet Specifications	2
Installing	
Uncrating and Inspection	3
Plumbing	3
Electrical.....	3
Installing Shelves	3
Installing Casters or LegsCasters	3
Placing The Cabinet.....	3
Sealing the Floor.....	3
Defrost System	4
Temperature Control	4
Cleaning.....	5
Cleaning Stainless Steel/Avoiding Corrosion	5
Replacement Parts	6/7
Wiring Diagram	8



8300 West Good Hope Road • Milwaukee, WI 53223 • Phone 414-353-7060 • Fax 414-353-7069
Toll Free 800-558-5592 • E-Mail: Perlick@Perlick.com • www.Perlick.com

Installation and Operating Instructions

Sizes and Specifications, Glass Frosters

MODEL NUMBERS

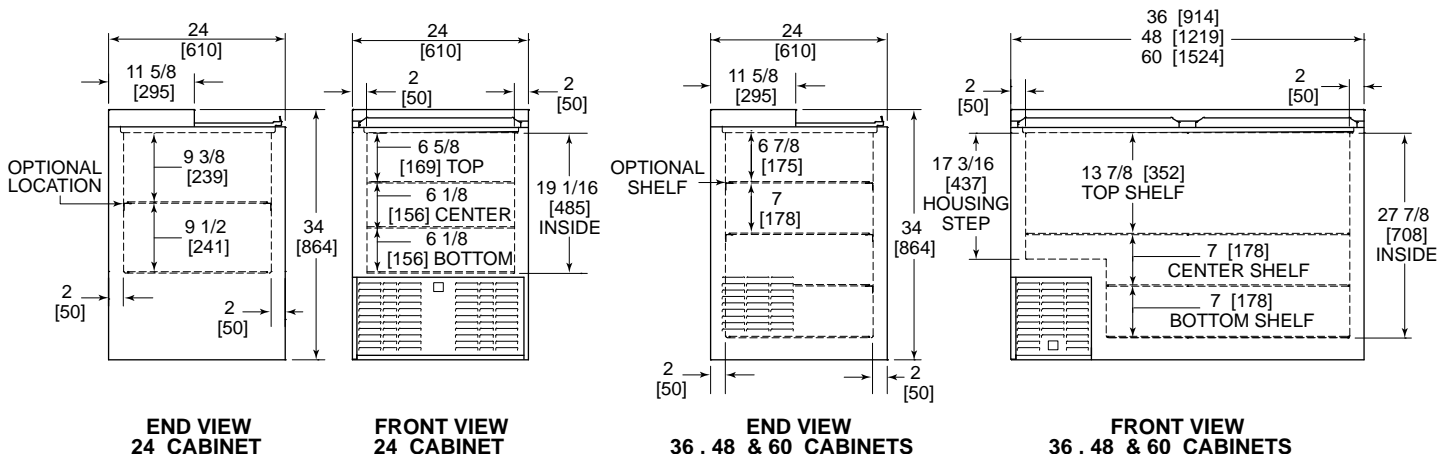
BLACK	FR24PS*	FR36PS*	FR48PS*	FR60PS*
STAINLESS STEEL	FR24SS*	FR36SS*	FR48SS*	FR60SS*
ALL STAINLESS	FR24AS*	FR36AS*	FR48AS*	FR60AS*

SPECIFICATIONS

LENGTH (mm)	24" (610)	36" (915)	48" (1219)	60" (1524)
INTERIOR CU. FT. (m ³)	3.75 (0.10)	7.83 (0.22)	11.68 (0.33)	15.53 (0.44)
PLATE CAPACITY†	135 Plates	215 Plates	300 Plates	400 Plates
GLASS CAPACITY† (2 Shelves)	90 Glasses	142 Glasses	214 Glasses	286 Glasses
WITH OPTIONAL THIRD SHELF	N/A	172 Glasses	273 Glasses	363 Glasses
CONDENSING UNIT H.P.	1/3	1/3	1/3	1/3
AMPS	5.8	6.8	6.2	7.1
SHIP WT lbs. (kg)	200 (91)	255 (115)	285 (129)	320 (145)
INTERIOR	All Models: Inner liner is 20 gauge type 304 stainless steel. Vinyl-covered wire bottom racks. Models with suffix letter 2 have vinyl-covered wire shelving for two levels.			
EXTERIOR	Black Model: Front and ends are 20 gauge, black powder coated steel. Back is 20 gauge galvanized steel. Bottom is 18 gauge galvanized steel. Stainless Exterior Models: Front and ends are 20 gauge type 304 stainless steel. Back is 20 gauge galvanized steel. Bottom is 18 gauge galvanized steel. All Stainless Models: Front, ends and back are 20 gauge, type 304 stainless steel. Bottom is 18 gauge, type 304 stainless steel. All Models: Top is 20 gauge, type 304 stainless steel. Aluminum front and back grilles.			
DOORS (Sliding)	18 gauge, type 304 stainless steel top and 20 gauge, type 304 door pan with ABS plastic frame and integral handle.			
ELECTRICAL	115V, 60 Hz., 1 Phase. Furnished with 6 foot rubber plug-in cord (115V model only). Also available in 230V, 50Hz., 1 Phase AC. carries CE marking of conformity.			
PLUMBING	None required. Moisture drains to self-evaporating condensing pan in machinery compartment.			
INSULATION	2 inch foamed-in-place polyurethane insulation.			
TEMPERATURE RANGE	Adjustable from -10° to +10° F.			
REFRIGERATION	R134a expansion valve system with hermetic condensing unit. Pulls out for service and cleaning.			
VENTILATION	2' model is front vented, all other models require 2" clearance from wall either on left end or back of cabinet for proper air flow.			
DEFROST SYSTEM	Solid-state, push-button defrost system, manually initiated at end of each day, automatically terminates after six hours. Evaporator automatically defrosts every 4 hours for approximately 20 minutes (time/temperature terminated).			
OPTIONAL ACCESSORIES	<ul style="list-style-type: none"> • Additional set of shelves • Set of 4 casters w/ brakes • Set of 4 adjustable legs • 2', 3', 4' and 5' Bottle rail (field installed) 			

* For two shelves, add the number 2 to the end of the model number (i.e. FR24SS2).

† Capacity calculations based on use of 3" dia. glass and 9 1/2" dia. x 1/2" thick plate.



Perlick is committed to continuous improvement. Therefore, we reserve the right to change specifications without prior notice.

Preparing the Cabinet – Glass Frosters

Uncrating and Inspection

Remove all crating material before operating. Carefully inspect cabinet for hidden damage. If damage is discovered, file your claim immediately with the transport company. Perlick is not responsible for damage in transit.

Plumbing

No plumbing connections are required. Condensate from the cooling coil is automatically evaporated through a condensate pan located in the condensing unit section.

Electrical

The cabinet must be connected to a separately fused power source (see Electrical Specification Plate) and grounded in accordance with National and Local Electrical Codes.
CAUTION: Do not attempt to operate the equipment on any other power source than that listed on the Electrical Specification Plate.

Installing Shelves (when provided)

The front and rear horizontal shelf brackets have been factory installed for a 2 shelf kit glass froster and for the optional third shelf.

Installing Casters or Legs (optional)

Attach casters or legs to the cabinet bottom in holes provided. Use the supplied $\frac{1}{4}$ "-20 hex head self-tapping machine screws. If unit is tipped on its back for an extended period of time, wait 24 hours after the unit is uprighted to plug the unit in.

Placing the Cabinet

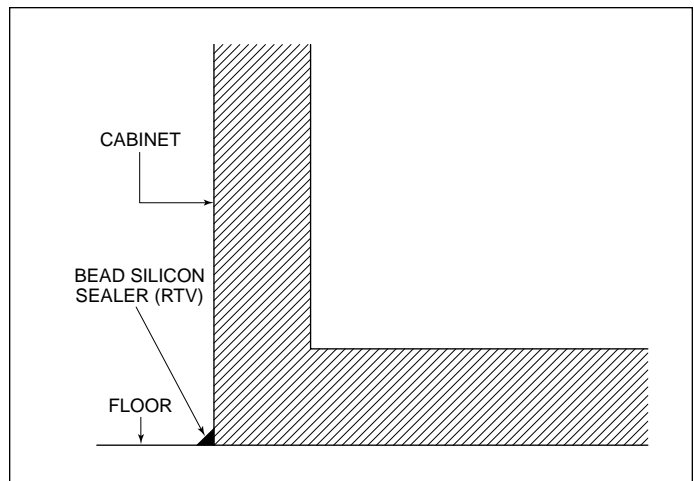
To assure maximum performance, fresh air must be allowed to circulate through the machinery compartment. It is important to allow at least two inches of clearance at the back or left end of the cabinet. Do not place anything in front of the cabinet that would obstruct air flow at these grilles. Do not place the unit in an unventilated small room.

CAUTION:

Removing the factory installed back clearance spacers without providing proper left side grill clearance for compressor air flow will void the warranty.

Cabinet should be leveled.

For sanitation purposes, it may be necessary to seal the base of the cabinet to the floor. This can be accomplished by laying a bead of silicone sealant along the base of the cabinet as shown by the figure below.



Operation Instructions – Glass Frosters

Defrost System

This system consists of a six-hour, as well as a four hour defrost cycle. The six hour defrost cycle is manually activated and automatically terminated, while the four hour cycle is completely automatic.

The Six Hour Solid-State Defrost Timer

This timer shuts off the power to the condensing unit, door frame heater, evaporator heater, and the automatic four hour defrost timer, while it supplies power to the evaporator fan.

To activate the six hour defrost system, depress the defrost switch located on the front grill of the cabinet. An amber light will illuminate and the defrost cycle will begin. When the defrost cycle ends, the light goes off and the cabinet resumes normal operation. To manually cancel the defrost cycle, momentarily turn off the electricity to the machine.

The Four Hour Defrost Timer

This timer ensures that frost will not buildup on the evaporator coil. Every four hours it shuts down the condensing unit and evaporator fan and supplies power to the defrost element clamped to the bottom of the evaporator. The defrost cycle lasts for approximately 20.

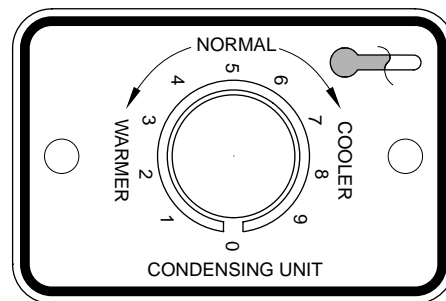
During normal operation it is recommended that the doors are not left open to prevent excessive frost buildup on the coil.

Temperature Control

An adjustable temperature control is located inside the froster on the evaporator fan panel assembly. Approximate temperature operating range: minus 15° F. minimum and plus 10° F. maximum. Make adjustments as shown to attain the desired temperature.

- **Colder Temperatures:** Turn the adjusting screw clockwise (to the right).
- **Warmer Temperatures:** Turn the adjusting screw counterclockwise (to the left).
- **Temperature Control “OFF”:** Turn the adjusting screw completely counterclockwise to the “O” position until a click is noted.

The condenser fan motor turns off and on with the compressor. The evaporator fan motor runs continuously, except during the 20 minute period of the four-hour defrost.



Cleaning Instructions – Glass Frosters

Cleaning the Condenser:

- The condenser (located behind the front grille) should be inspected every 30 days, and cleaned, if necessary. Failure to keep the condenser clean will cause a loss in condensing unit efficiency, or compressor failure.

Cleaning the Doors:

- Doors should be periodically removed from the cabinet and inspected for a buildup of foreign materials, such as syrups, beer, etc. Buildups on the underside of the doors, along with the cabinet breaker strips on which they ride, will cause them to bind, and therefore, not function as designed. If dirty, these surfaces should be cleaned with a mild detergent and water then coated with a silicone lubricating material. Aerosol silicone sprays can be obtained locally at most department or automotive stores.

To remove doors:

- With door closed, lift it upward by its handle and slide forward until door clears the cabinet top. Use the reverse procedure to reinstall the doors.

Cleaning the Cabinet:

- Use a damp cloth with a mild detergent and water to clean the inside and outside of the cabinet. Dry thoroughly. Do not allow cleaning agents or large amounts of water to go down the drain. Use an acceptable stainless steel polish to clean all stainless steel surfaces. Never use steel wool or scouring pads to clean stainless steel.

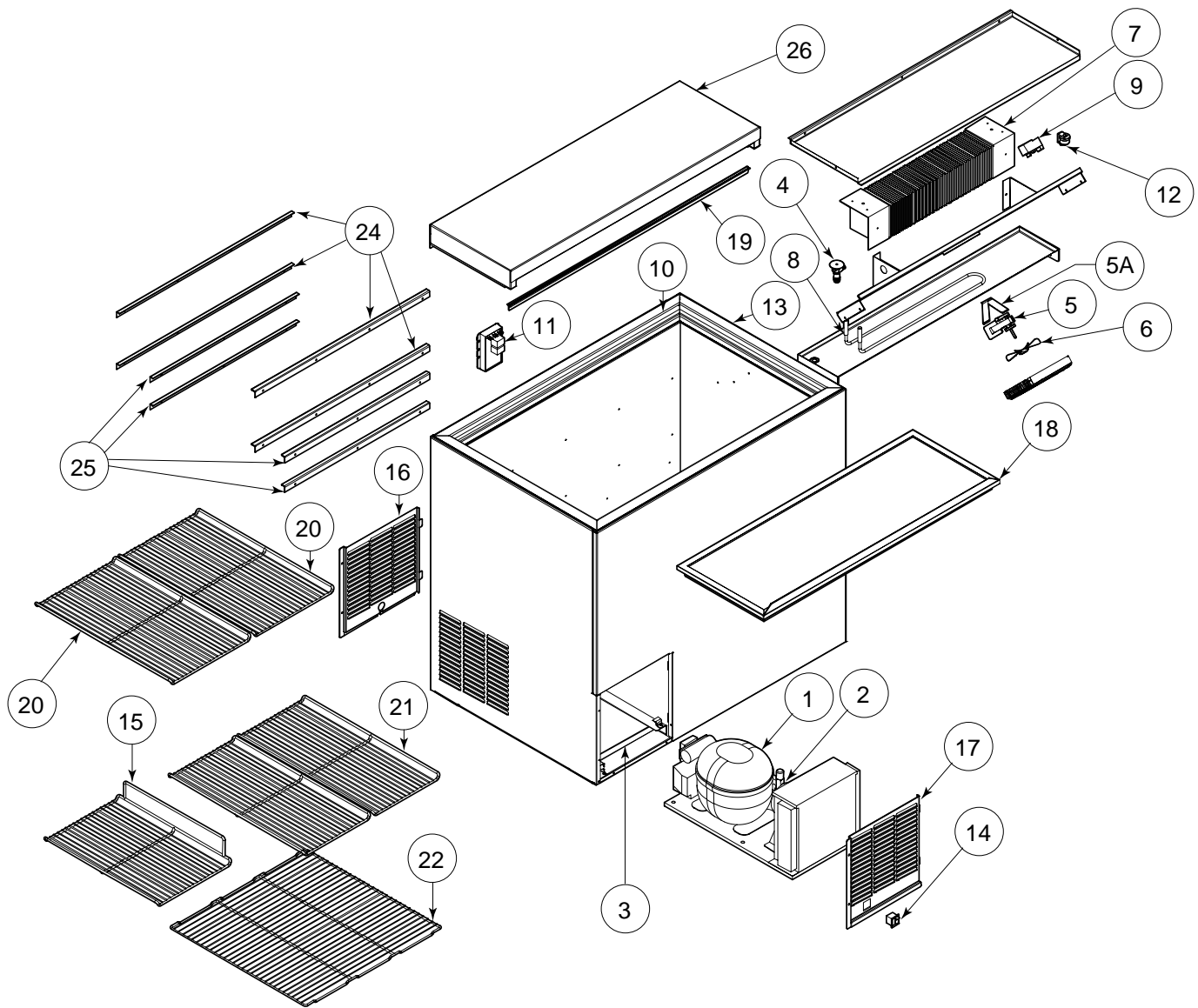
Avoiding Stainless Steel Corrosion

Corrosion can be prevented by following product cautions, cleaning instructions and avoiding use of certain chemicals or objects which will cause stainless steel corrosion.

STAINLESS STEEL ENEMY

- Steel wool or steel scouring pads
- Cherry/Orange/Olive juice
- Chlorine Bleach
- Sharp Objects

Replacement Parts – Glass Frosters



CAUTION

- Service should be done by a qualified refrigeration technician.
- Disconnect all power before servicing the cabinet.

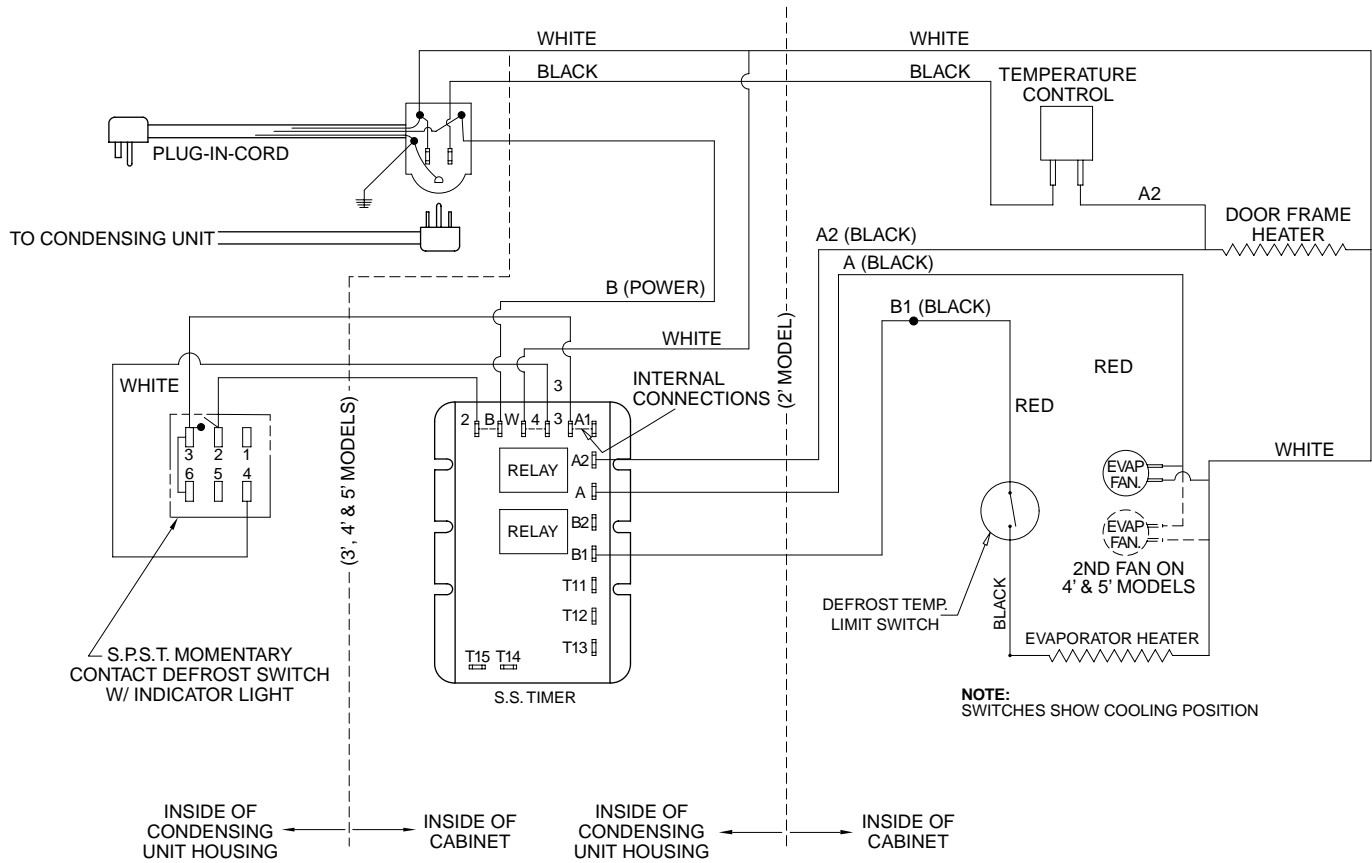


Perlick is committed to continuous improvement. Therefore, we reserve the right to change specifications without prior notice.

Replacement Parts – Glass Frosters

MODEL NOS.		FR24	FR36	FR48	FR60
Item	Description	Part Numbers			
	Complete condensing unit	C22646	C22646	C22646	C22646
1	Replacement compressor R134a	513200003	513200003	513200003	513200003
2	Condensing unit fan motor assy.	215315009	215315009	215315009	215315009
	Terminal board	219101538	219101538	219101538	219101538
	Overload protector	MRT22AFZ5590	MRT22AFZ5590	MRT22AFZ5590	MRT22AFZ5590
	Relay	21351619	21351619	21351619	21351619
	Start capacitor (378-454MFD)	13556532	13556532	13556532	13556532
3	Condensate pan	64537	64626	64626	64626
4	Expansion valve	63549	63549	63549	63549
5	Evaporator fan motor	C15239A	C15239A	(2) C15239A	(2) C15239A
5A	Evaporator fan motor bracket	65060-1	65060-1	(2) 65988-1	(2) 65988-1
6	Evaporator fan blade	63461	63461	(2) 63461	(2) 63461
7	Evaporator coil assembly	64785-1	C17511-1	C17511-1	C17511-2
8	Evaporator defrost heater	C25655-1	65045-1	65045-1	61900
9	Temperature control	61282	61282	61282	61282
10	Perimeter heater wire	C25650-1	61388-1	C25649-1	61898
11	Defrost timer	57466	57466	57466	57466
	Timer location	Behind Grille	Inside liner, back left corner		
12	Defrost temp limit switch	57676	57676	57676	57676
13	Breaker strip kit	63608-1	63608-2	63608-3	63608-4
14	Rocker switch with pilot	C31659	C31659	C31659	C31659
15	Compressor side shelf	64810-1	64810-1	64810-1	64810-1
16	Back grille	N/A	64644-1	64644-1	64644-1
17	Front grille	64167A-1	64643-1	64643-1	64643-1
18	Door assembly	64776-24	64776-36	(2) 64776-24	64776-24
	Door assembly (multiple doors)	N/A	N/A	N/A	64776-36
19	Top wiper gasket	C27941-3	C27941-5	C27941-1	C27941-6
20	Wide shelf	N/A	(2) 64811-1	(4) 64811-1	(6) 64811-1
21	Narrow shelf	(4) 64809-1	(2) 64809-1	(2) 64809-1	(2) 64809-1
22	Bottom floor rack (wide)	64814-1	64814-1	64814-1	64814-1
23	Bottom floor rack (narrow)	N/A	N/A	64815-1	(2) 64815-1
23A	Complete shelf kit	63613	63614	63615	63616
24	Shelf "L" bracket (long)	N/A	65014-36	65014-48	65014-60
25	Shelf "L" bracket (short)	65015-24	65015-36	65015-48	65015-60
26	Back, top assembly	64692-24A	64692-36A	64692-48A	64692-60A
Items Not Shown					
	Wire harness main	65039-1	65039-1	65038-1	65038-1
	Wire harness, defrost timer to switch (14)	61959	61959	61959	61959
	Evaporator tube (1¼" U. bend)	63553-1	63553-1	63553-1	63553-1
	Evaporator tube (4⅛" U. bend)	63554-1	63554-1	63554-1	63554-1
	Suction/liquid lines heat exchanger with dryer	65089	65089	65089	65089
	Mullion assembly	—	—	64823R	64823R
	Refrigerand charge (oz. R134a)	10.0	10.3	12.5	12.5

Wiring Diagram – Glass Frosters



8300 West Good Hope Road • Milwaukee, WI 53223 • Phone 414-353-7060 • Fax 414-353-7069
 Toll Free 800-558-5592 • E-Mail: Perlick@Perlick.com • www.Perlick.com